



2017

# STUDY ENGLISH IN AUSTRALIA & NEW ZEALAND

WELCOME TO YOUR  
NEW WORLD

AUCKLAND •  
ADELAIDE •  
BRISBANE •  
CAIRNS •  
MELBOURNE •  
PERTH •  
SYDNEY CITY •  
SYDNEY MANLY •



## WELCOME TO KAPLAN. WELCOME TO YOUR NEW WORLD.

The world of today is increasingly interconnected. Businesses globalize, cultures interact, and the ability to communicate with people from different backgrounds becomes more and more essential to succeed. We at Kaplan, a world leader in English education, are proud to offer our students an immersive, life-changing experience that brings their language learning to life and sets them apart for a promising future. Learning English in a new country, experiencing other cultures firsthand, and developing networks of classmates and teachers that span the globe, our students leave the walls of Kaplan confident, mature, and poised to take on their future. Whether your next steps involve an English-speaking university, a career abroad or at home in an international corporation, or simply the ability to travel with ease and find common ground with other people, we at Kaplan look forward to welcoming you to your new world in English.

**David Jones**  
CEO of Kaplan International

### 5 REASONS TO CHOOSE KAPLAN

1. Specially designed *K+* curriculum and a wide range of courses
2. Over 75 years of teaching experience and a reputation for academic excellence
3. More than 40 schools to choose from in exciting, central locations
4. Welcoming homestays and residences handpicked by a specialized accommodation team
5. Partnerships with a wide range of global universities and further education institutions

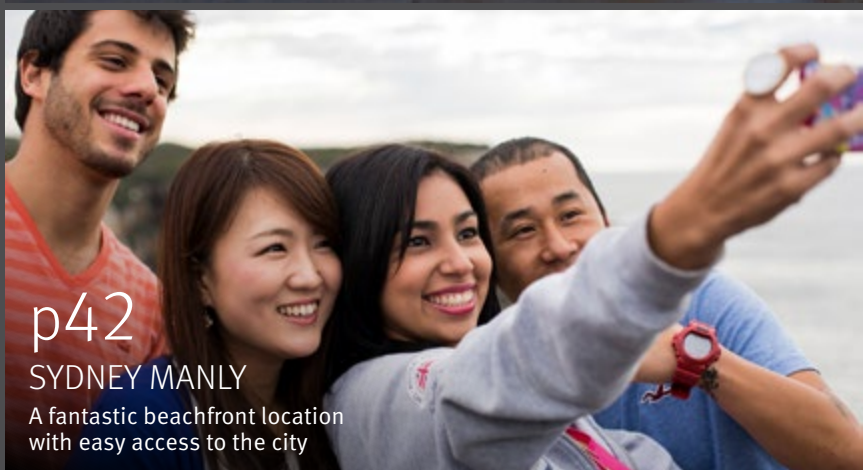
## DESTINATIONS

Choose your ideal location from  
8 amazing Kaplan schools across  
Australia and New Zealand



p40  
AUCKLAND

An exciting harborside city surrounded  
by stunning natural scenery



p42  
SYDNEY MANLY

A fantastic beachfront location  
with easy access to the city



p45  
ADELAIDE

The festival and events capital of Australia





**p41**  
**MELBOURNE**  
A stylish, creative, and multicultural city



**p43**  
**SYDNEY CITY**  
Home to iconic Australian landmarks and beaches



**p44**  
**PERTH**  
Perfect for sunny days and outdoor activities



**p46**  
**BRISBANE**  
A green city with a fantastic climate and numerous cultural activities



**p47**  
**CAIRNS**  
Gateway to the Great Barrier Reef and the tropical Daintree Rainforest

## CONTENTS

- 4** Your Kaplan journey starts here
- 6** The Kaplan learning method
- 10** Your route to rapid progress
- 12** Choose your ideal course
- 13** What do you want to achieve?
- 14** Intensive English
- 15** General and Vacation English
- 16** Academic Year and Semester
- 17** English for business success
- 18** Exams: prepare and succeed
- 20** English for Academic Purposes
- 21** Hoping to attend a college or university?
- 22** Pathways to further studies
- 23** Pathway options in New Zealand
- 24** Pathway options in Australia
- 26** Kaplan Business School
- 27** Murdoch Institute of Technology
- 28** Bradford College
- 29** Career programs & services
- 30** English packages
- 31** English plus
- 32** Meet your new friends
- 34** A great place to stay
- 36** Soaking up the culture
- 39** Our schools
- 48** Where can your English take you?
- 49** Prices & start dates
- 53** Enrollment form
- 54** Terms & conditions
- 56** Facilities & services
- 56** Courses & programs
- 56** Public holidays



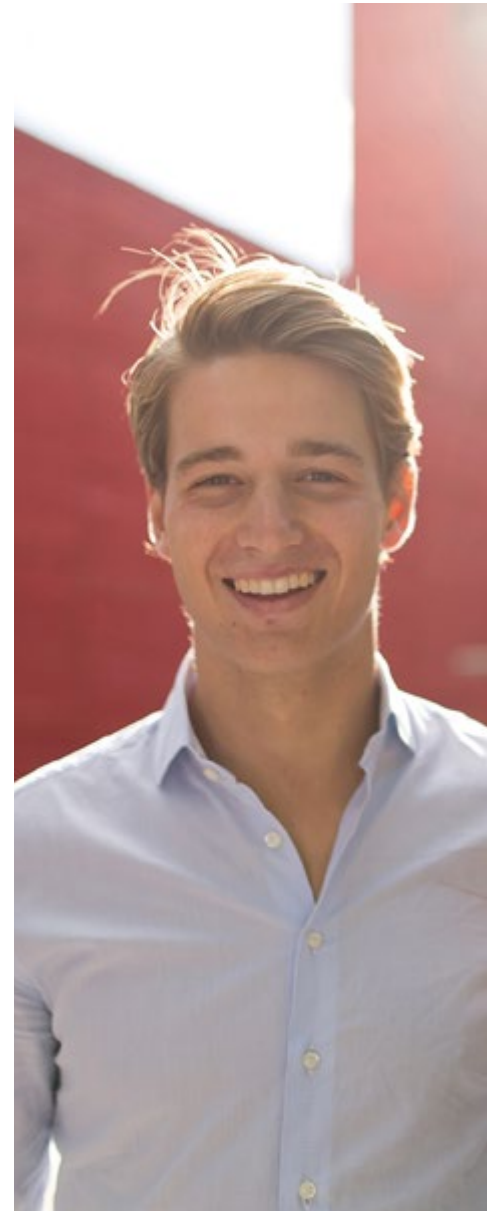
# YOUR KAPLAN JOURNEY STARTS HERE

From the day you arrive to the day you finish your course, we'll be there to help and to make sure you get the very best from the amazing experience of learning English in another country. Here's how:



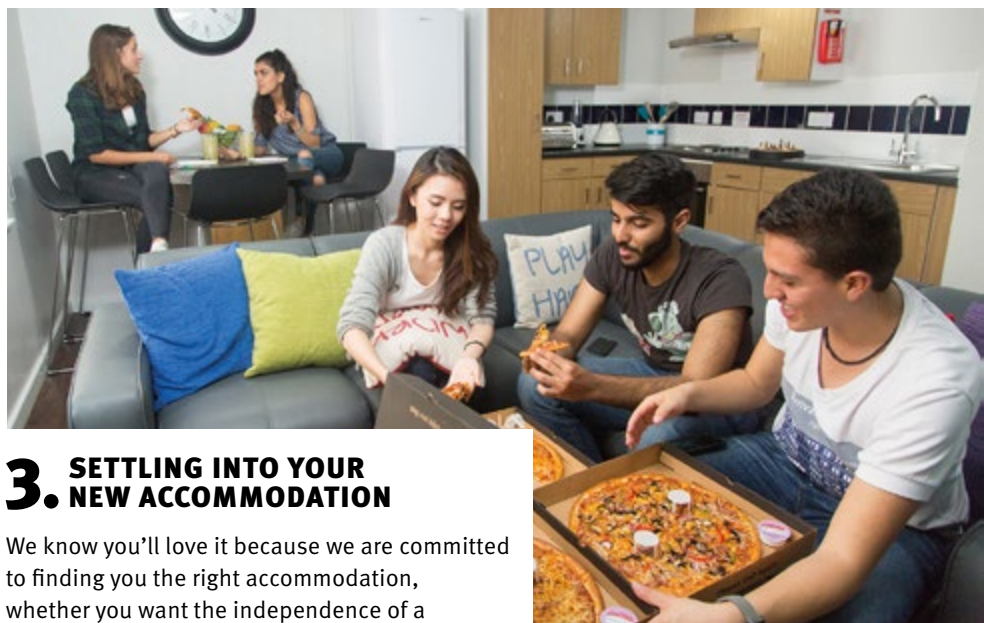
## 1. SUPPORT FROM STUDENT ADVISORS BEFORE YOU LEAVE

You'll have lots to do before you leave, so our advisors will be there to help you along the way. We'll send you information about your course, living costs, insurance, paperwork you might need for your visa, and even what to pack.



## 2. PERSONALIZED TRANSFER SERVICES FROM THE AIRPORT

A friendly face in a foreign country is always welcome. So how about a personalized transfer service to meet you at the airport the moment you touch down? If you choose, we can arrange for a trusted driver to pick you up and take you straight to your accommodation.



## 3. SETTLING INTO YOUR NEW ACCOMMODATION

We know you'll love it because we are committed to finding you the right accommodation, whether you want the independence of a student residence, where you'll live around other students, or the comforts of staying in a homestay with locals, where you'll truly immerse yourself in the culture. We inspect all of our accommodation options regularly and have staff at the school to help you with any questions.



## 4. A WARM WELCOME ON YOUR FIRST DAY

You'll have time to settle in before lessons start. We'll ensure you are able to meet everyone, from school staff to teachers and fellow students, and show you around your new school surroundings, with time to discover the local area. We'll determine your English level to make sure we put you in the right class, then give you a personal timetable so you are ready for your lessons.



## 6. AN EXCITING SOCIAL PROGRAM AFTER CLASS

It's not all study. Every school runs a social program that makes the most of the city and sights around it. Explore a new country, enjoy trips and activities with friends, and practice your English in a relaxed and informal way.



## 5. YOUR CLASSES

The start of a fantastic experience — modern facilities, educational excellence, and friendly staff determined to make you feel at home. We pride ourselves on having passionate teachers who love teaching international students. You will be made to feel comfortable in class, and share your learning experience with students of a similar level of English from all over the world. We'll encourage and help you every step of the way, and, with our *K+* learning system, you'll make rapid progress towards your goals.



## 7. YOUR CERTIFICATE

Congratulations, you've achieved something truly worthwhile — a set of English skills that can take you to university, a great job, or around the world. You'll have a Kaplan Certificate to prove it, a network of new friends to celebrate it, and amazing memories that will last forever.

## WELL DONE

You've come such a long way. Your new life in English begins now!



The K+ advantage

# THE KAPLAN LEARNING METHOD

AN INTEGRATED APPROACH TO LEARNING



K+ is our specially designed English language learning system. Kaplan's team of experts has taken the best elements of face-to-face teaching and combined them with all the advantages of online learning. With our K+ learning materials you'll gain all the skills you need to become a confident English speaker in every aspect of life, and our qualified, dedicated, and experienced teachers will help you all the way.





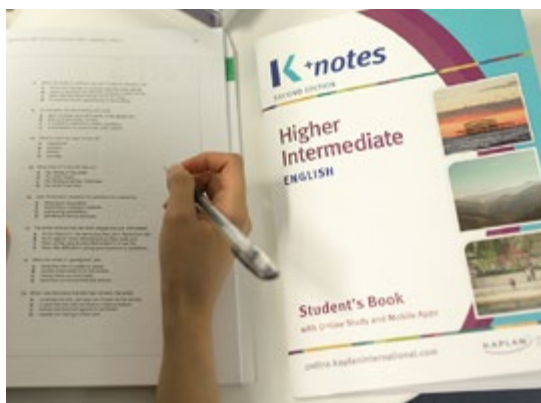
## YOUR LESSONS

Kaplan teachers use a range of highly effective exercises to keep classes interesting, engaging, and challenging, allowing you to focus on building skills and confidence while improving your pronunciation, broadening your vocabulary, and mastering grammar. Our *K+notes* course books and interactive whiteboards will develop your reading and writing skills and encourage you to speak English confidently inside the classroom and beyond.



## PASSIONATE TEACHERS

Our fully qualified teachers are passionate about helping you reach your goals. They will teach, support, and motivate you along every step of your English journey.



## OUR *K+NOTES* COURSE BOOKS

Our course books are dynamic, focused on interesting topics, and packed with exercises to help you practice speaking and listening while working on your grammar and vocabulary. Enjoy using them in class, then continue working at home with our *K+tools* online learning program.

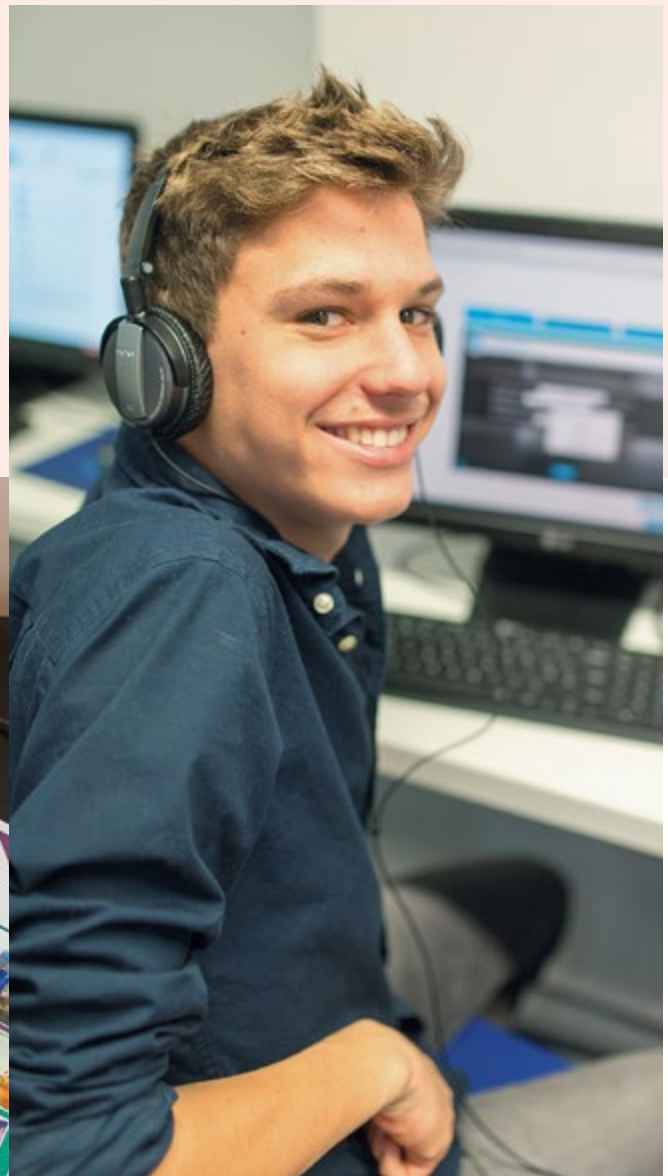
## INTERACTIVE WHITEBOARDS

Most of our classrooms have interactive whiteboards. They're a great way to bring the *K+* learning materials to life as teachers and students use them to interact and collaborate.



## ONLINE LEARNING

All Kaplan students have access to online practice tools to further boost their opportunities for improvement. Students can use these tools in the school multimedia lab or on their own tablets, computers, or mobile devices.



## K+TOOLS

Complement your in-class lessons with access to level-appropriate online materials with *K+tools*. These materials are directly linked to your *K+notes* course books in class and will give you additional examples to test yourself and solidify class lessons. You'll get instant feedback on your performance and progress, and you can study whenever and wherever you want.







### **K +EXTRA**

Improve even faster with our online *K +eXtra* self-directed study materials\*. Whereas *K +tools* builds on the materials you are discussing in class, *K +eXtra* gives you the opportunity for independent learning with access to entirely new grammar and vocabulary exercises. Make your learning fun with interactive questions, videos, audio examples, and assessment tasks. With modules dedicated to every language area of our *K+* curriculum, you'll have plenty of choices and be able to focus on any specific areas of difficulty. Each module is split into Learn, Practice, and Test segments.

You'll receive your very own profile and login, so every time you come back to your online account, you can pick up exactly where you left off. You can also work at different levels in different skills, depending on your ability. If your grammar is more advanced than your pronunciation, for instance, you might work at Higher Intermediate in one and Lower Intermediate in the other.

\**K +eXtra* is not available to students studying Vacation English.



### **BEYOND THE CLASSROOM**

Your English language journey doesn't have to end after your time at our school has drawn to a close. Once you've completed your studies, you may purchase continued subscriptions to *K +tools* and *K +eXtra* in 3-month blocks to continue to build on your English skills from the comfort of your home country, or from wherever you end up!

### **K +CLUBS STUDY GROUPS**

In addition to your regular classes, there are also teacher-led study sessions that run throughout the week. These study groups explore a wide variety of topics and are an excellent way to practice skills learned in the classroom and make new friends.



“The *K+* approach is highly effective because it has been developed to optimize the learning of English by applying research-based practices of feedback and group-based learning. The *K+* in-class approach maximizes opportunities for students to use their new skills together and get feedback from well-trained teachers. Research also confirms learners need different amounts of practice, in part depending on where they start. *K +tools* allows students to practice as much as they need on their own, making their in-class and social activities more productive and enjoyable.”

**Dr. Bror Saxberg, M.D. Ph.D., Kaplan's Chief Learning Officer**

**Educated at the Universities of Harvard, Oxford, and MIT, Dr. Saxberg is a world-renowned figure in the field of Learning Science.**





## YOUR ROUTE TO RAPID PROGRESS

As a student on any of our English courses, you'll want to progress quickly and know you're doing well. It's important to have a clear view of the path you want to take towards your goals. Our six English levels mean it's easy to find a starting point that matches your abilities and allows you to measure your progress. You may even surprise yourself by how quickly you move up the levels. Beginner courses for students with no English background are available in selected Kaplan destinations.



### 10 WEEKS

Students on an Intensive English course typically take just **10 WEEKS** to progress from one language level to the next\*.

**0**

weeks

### ELEMENTARY

You can use and recognize common words, greetings, and simple instructions, but you have limited grammatical knowledge.

#### EXAM LEVELS

- CEFR **A1** (KITE 225–274)
- TOEFL® **0–12**
- CAMBRIDGE **100–120**
- ALTE **Breakthrough Level**

**10**

weeks

### LOWER INTERMEDIATE

You can write and speak in familiar situations and have a fair knowledge of grammar, but your vocabulary is limited.

#### EXAM LEVELS

- CEFR **A2** (KITE 275–349)
- TOEFL® **13–36**
- IELTS **3.5–4.0**
- CAMBRIDGE **120–140 KET**
- ALTE **Level 1**

\*Please note that 10 weeks per level is just a guide to average progress rates on an Intensive English course. We cannot guarantee an exact period of study over which specific language goals can be attained.

**20**

weeks

### INTERMEDIATE

You can talk about everyday matters, but with a limited range of style and expression. You read and write fluently about familiar topics.

#### EXAM LEVELS

- CEFR **B1** (KITE 350–424)
- TOEFL® **37–54**
- IELTS **4.5–5.0**
- CAMBRIDGE **140–160 PET**
- ALTE **Level 2**
- PTE **43–58**





## INTRODUCING KITE ADAPTIVE ONLINE TESTING

Our new adaptive online testing is now available to students studying at locations throughout Australia and New Zealand taking their placement, progress, and exit tests. Aligned to CEFR and providing even more detailed results, the new test will allow increasingly accurate progress tracking and personalized study planning.

**30**  
weeks

### HIGHER INTERMEDIATE

You are competent with grammar and can understand and contribute to most conversations on familiar topics, but may make some mistakes.

#### EXAM LEVELS

- CEFR **B2** (KITE **425–499**)
- TOEFL® **55–74**
- IELTS **5.5–6.0**
- CAMBRIDGE **160–180 FCE**
- ALTE **Level 3**
- PTE **59–75**

**40**  
weeks

### ADVANCED

You communicate confidently and fluently, but may lack specialist vocabulary and make some errors with complex language.

#### EXAM LEVELS

- CEFR **C1** (KITE **500–534**)
- TOEFL® **75–91**
- IELTS **6.5–7.0**
- CAMBRIDGE **180–200 CAE**
- ALTE **Level 4**
- PTE **76–84**

**50**  
weeks

### PROFICIENCY

You are very close to native speaker fluency and can handle all complex written and spoken language.

#### EXAM LEVELS

- CEFR **C2** (KITE **535+**)
- TOEFL® **92+**
- IELTS **7.5+**
- CAMBRIDGE **200+ CPE**
- ALTE **Level 5**
- PTE **85–100**

## PROGRESS AND LEVEL CHART

This chart shows the progress you can make with a Kaplan language course. On arrival at your school, you will be given a placement test to enable our staff to place you in the correct class for your level of language ability. Regular progress tests during the course will then allow your teachers to monitor your level of improvement.



# CHOOSE YOUR IDEAL COURSE

Whatever your language goals, Kaplan has a course that will excite, support, and motivate you. Our friendly, passionate, and experienced teachers will help you progress rapidly with confidence.

## FLEXIBLE ENGLISH COURSES

Popular and versatile courses where you can study anywhere from 2 to 52 weeks for a little improvement or a dramatic step up.

- Intensive English – page 14
- General English – page 15
- Vacation English – page 15
- Evening courses – pages 14, 18

## LONG-TERM COURSES

Boost your fluency and vocabulary with a life-changing experience studying in another country.

- Academic Year – page 16
- Academic Semester – page 16

## BUSINESS ENGLISH COURSES

Master all the elements of English in the workplace with a high-level specialist course.

- English for Business – page 17
- Intensive Business English – page 17

## ACADEMIC ENGLISH & EXAM PREPARATION COURSES

The skills, strategies, and confidence to help you improve your score and prepare for further study.

- IELTS Preparation – page 18
- Cambridge Exam Preparation – page 18
- English for Academic Purposes – page 20

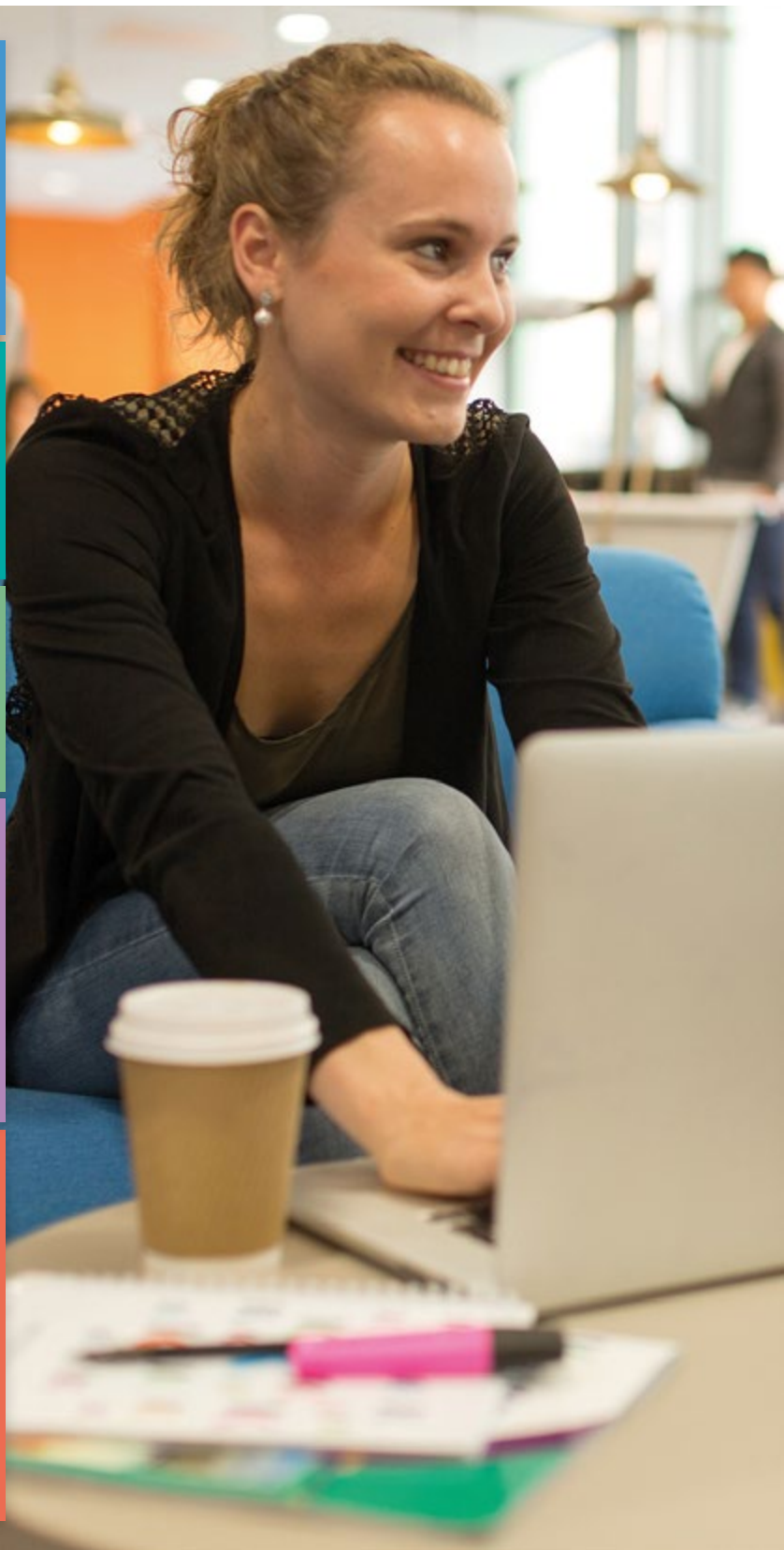
*Find out more about our pathway options in Australia and New Zealand – pages 21–28*

## EXTRA PROGRAMS

Further your career, or combine adventure and learning with our full range of additional programs.

- Work & Study programs – page 29
- Group Study Tours – page 30
- English for Young Learners – page 30
- Demi Pair – page 31
- English Plus Diving – page 31
- English Plus Surfing – page 31
- English Plus Rugby – page 31

*Options vary between schools. Contact us for more information.*



# WHAT DO YOU WANT TO ACHIEVE?

Whether you're hoping for quick general improvement, a learning experience targeted for a specific exam, or a flexible timetable that lets you make the most of your time abroad, we're sure to have a program that perfectly fits your language goals.



## OVERALL IMPROVEMENT

- General English
- Academic Semester

## MAXIMIZE YOUR ENGLISH FLUENCY

- Intensive English
- Academic Year

## PREPARE FOR HIGHER EDUCATION

- IELTS Preparation
- Cambridge Exam Preparation
- English for Academic Purposes

## PREPARE FOR A PROMISING CAREER

- English for Business
- Intensive Business English

## EXPLORE A NEW CULTURE

- Vacation English
- Group Study Tours
- English for Young Learners
- Demi Pair
- English Plus Diving
- English Plus Surfing
- English Plus Rugby



Flexible learning for all-around improvement

# INTENSIVE ENGLISH



## TELL ME ABOUT THE COURSE

### How long are the lessons?

Daytime lessons: 45 minutes

Evening lessons: 60 minutes

### What's the average class size?

Average of 12, maximum of 15

### What are the entry levels?

From Elementary to Advanced (see page 10)

### What age do I have to be?

Daytime lessons: 16 is the minimum age

Evening lessons: 18 is the minimum age

### Where can I study?

See our list of locations on page 56

## WHY CHOOSE THIS COURSE?

- Receive an intensive focus on all language skills
- Personalize your course with Specific Skills classes
- Improve your English quickly and effectively, no matter what your level is
- Choose your own course length and start date

## INTENSIVE ENGLISH

### EACH WEEK YOU RECEIVE

#### INTENSIVE ENGLISH COURSE:

##### 20 English Lessons

Reading, writing, listening, conversation, grammar, vocabulary, and pronunciation through an integrated skills approach

21 HOURS

##### 8 Specific Skills Lessons

A range of subjects to help you tailor your program to meet your specific learning needs

#### INTENSIVE ENGLISH EVENING COURSE:

##### 14 English Lessons

Enjoy the same Intensive English lessons on an evening timetable in selected locations (see page 56 for availability)

20 HOURS

##### 6 Specific Skills Lessons

A range of subjects to help you tailor your program to meet your specific learning needs

### IN ADDITION TO YOUR LESSONS

#### K +clubs Study Groups

Access to teacher-led study sessions with guidance and monitoring

5.25+ HOURS

#### K +tools Online Learning

Access to K +tools complementary learning materials

#### K +eXtra Online Learning

Access to K +eXtra additional learning materials for self-directed study

## HOW LONG?

Study a minimum of 2 weeks

## WHEN CAN I START?

Classes start every week

Flexible learning for all-around improvement

# GENERAL AND VACATION ENGLISH

## WHY CHOOSE THIS COURSE?

- Improve your core English language skills
- Start your course at any level from Elementary to Advanced
- Balance study with free time for leisure activities
- Choose your own course length and start date

## GENERAL ENGLISH\*

EACH WEEK YOU RECEIVE	
<b>20 English Lessons</b> Reading, writing, listening, conversation, grammar, vocabulary, and pronunciation through an integrated skills approach	15 HOURS
IN ADDITION TO YOUR LESSONS	
<b>K +clubs Study Groups</b> Access to teacher-led study sessions with guidance and monitoring	5.25+ HOURS
<b>K +tools Online Learning</b> Access to K +tools complementary learning materials	
<b>K +eXtra Online Learning</b> Access to K +eXtra additional learning materials for self-directed study	
HOW LONG?	
Study from 2–52 weeks	
WHEN CAN I START?	
Classes start every week	

\*General English is only available in Auckland.

## VACATION ENGLISH

EACH WEEK YOU RECEIVE	
<b>20 English Lessons</b> Reading, writing, listening, conversation, grammar, vocabulary, and pronunciation through an integrated skills approach	15 HOURS
IN ADDITION TO YOUR LESSONS	
<b>K +eXtra Online Learning</b> Access to K +tools complementary learning materials	
HOW LONG?	
Study from 2–52 weeks** (depending on location)	
WHEN CAN I START?	
Classes start every week	

\*\*Vacation English course length is dependent on visa regulations in the destination country and is not suitable for Student Visa holders in Australia and New Zealand.

## TELL ME ABOUT THE COURSES

### How long are the lessons?

45 minutes

### What's the average class size?

Average of 12, maximum of 15

### What are the entry levels?

From Elementary to Advanced (see page 10)

### What age do I have to be?

16 is the minimum age

### Where can I study?

See our list of locations on page 56





Long-term courses for fluency and value

# ACADEMIC YEAR AND SEMESTER

## WHY CHOOSE THIS COURSE?

- A favorite among students who would like to achieve a high level of fluency
- Long-term discounts mean excellent value for money
- Take advantage of one, two, or three weeks of session breaks scheduled to let you make the most of your new home
- Spend months immersed in a new and exciting culture

## INTENSIVE ACADEMIC YEAR OR SEMESTER

### EACH WEEK YOU RECEIVE

#### 20 English Lessons

Reading, writing, listening, conversation, grammar, vocabulary, and pronunciation through an integrated skills approach

#### 8 Specific Skills Lessons

A range of subjects to help you tailor your program to meet your specific learning needs

#### IN ADDITION TO YOUR LESSONS

#### K +clubs Study Groups

Access to teacher-led study sessions with guidance and monitoring

#### K +tools Online Learning

Access to K +tools complementary learning materials

#### K +eXtra Online Learning

Access to K +eXtra additional learning materials for self-directed study

21 HOURS

5.25+ HOURS

“All of the teachers enjoy teaching, talking with students, and sharing their opinions.”

Tomas, Czech Republic,  
studied in Auckland



## ACADEMIC YEAR NOW BACK IN AUSTRALIA

### HOW LONG?

Two terms (5 or 6 months) or three terms (8 months)

### FOR START DATES SEE TABLE BELOW

ACADEMIC SEMESTER – 5 MONTHS (2 TERMS)										
TUITION DATES		SESSION BREAK		TOTAL WEEKS						
START	END	START	END	TUITION		SESSION BREAK		TOTAL		
03 Jan 17*	26 May 17	06 Mar 17	10 Mar 17							
13 Feb 17	07 Jul 17	24 Apr 17	28 Apr 17							
13 Mar 17*	04 Aug 17	05 Jun 17	09 Jun 17							
03 Apr 17	25 Aug 17	05 Jun 17	09 Jun 17							
15 May 17	06 Oct 17	24 Jul 17	28 Jul 17							
12 Jun 17*	03 Nov 17	28 Aug 17	01 Sep 17							
24 Jul 17	15 Dec 17	02 Oct 17	06 Oct 17							
28 Aug 17	02 Feb 18	06 Nov 17 25 Dec 17	10 Nov 17 05 Jan 18							
18 Sep 17	16 Feb 18	25 Dec 17	05 Jan 18							
25 Sep 17	23 Feb 18	25 Dec 17	05 Jan 18							
09 Oct 17	09 Mar 18	25 Dec 17	05 Jan 18							
08 Jan 18	01 Jun 18	05 Mar 18	09 Mar 18							
12 Feb 18	06 Jul 18	23 Apr 18	27 Apr 18							
12 Mar 18	03 Aug 18	04 Jun 18	08 Jun 18							
02 Apr 18*	24 Aug 18	04 Jun 18	08 Jun 18							
ACADEMIC SEMESTER – 6 MONTHS (2 TERMS)										
TUITION DATES		SESSION BREAK		TOTAL WEEKS						
START	END	START	END	TUITION		SESSION BREAK		TOTAL		
03 Jan 17*	23 Jun 17	06 Mar 17	10 Mar 17							
13 Feb 17	04 Aug 17	24 Apr 17	28 Apr 17							
13 Mar 17*	01 Sep 17	05 Jun 17	09 Jun 17							
03 Apr 17	22 Sep 17	05 Jun 17	09 Jun 17							
15 May 17	03 Nov 17	24 Jul 17	28 Jul 17							
12 Jun 17*	01 Dec 17	28 Aug 17	01 Sep 17							
24 Jul 17	26 Jan 18	02 Oct 17 25 Dec 17	06 Oct 17 05 Jan 18							
28 Aug 17	02 Mar 18	06 Nov 17 25 Dec 17	10 Nov 17 05 Jan 18							
18 Sep 17	16 Mar 18	25 Dec 17	05 Jan 18							
25 Sep 17	23 Mar 18	25 Dec 17	05 Jan 18							
09 Oct 17	06 Apr 18	25 Dec 17	05 Jan 18							
08 Jan 18	29 Jun 18	05 Mar 18	09 Mar 18							
12 Feb 18	03 Aug 18	23 Apr 18	27 Apr 18							
12 Mar 18	31 Aug 18	04 Jun 18	08 Jun 18							
02 Apr 18*	21 Sep 18	04 Jun 18	08 Jun 18							
ACADEMIC YEAR – 8 MONTHS (3 TERMS)										
TUITION DATES		SESSION BREAK 1		SESSION BREAK 2		TOTAL WEEKS				
START	END	START	END	START	END	TUITION		SESSION BREAK	TOTAL	
03 Jan 17*	25 Aug 17	06 Mar 17	10 Mar 17	05 Jun 17	09 Jun 17					
13 Feb 17	06 Oct 17	24 Apr 17	28 Apr 17	10 Jul 17	14 Jul 17					
03 Apr 17	24 Nov 17	05 Jun 17	09 Jun 17	28 Aug 17	01 Sep 17					
12 Jun 17*	09 Feb 18	28 Aug 17	01 Sep 17	25 Dec 17	05 Jan 18					
24 Jul 17	23 Mar 18	02 Oct 17	06 Oct 17	25 Dec 17	05 Jan 18					
28 Aug 17	27 Apr 18	25 Dec 17	05 Jan 18	26 Feb 18	02 Mar 18					
18 Sep 17	18 May 18	25 Dec 17	05 Jan 18	05 Mar 18	09 Mar 18					
25 Sep 17	25 May 18	25 Dec 17	05 Jan 18	12 Mar 18	16 Mar 18					
08 Jan 18	31 Aug 18	05 Mar 18	09 Mar 18	04 Jun 18	08 Jun 18					
02 Apr 18*	23 Nov 18	04 Jun 18	08 Jun 18	27 Aug 18	31 Aug 18					

\*Public holiday dates may affect the start date in your chosen school, see page 56.  
Please check the dates specific to your school.  
Please note that course options will depend on your language level and availability at the school of your choice.

For more information: [kaplan.do/ays](http://kaplan.do/ays)

Intensive courses for English in the workplace

# ENGLISH FOR BUSINESS SUCCESS

## WHY CHOOSE THIS COURSE?

- Focus on the more technical language used in business situations
- Gain the confidence to work in an English-speaking environment
- Learn essential communication skills for meetings and interviews
- Boost your career opportunities in your home country

## TELL ME ABOUT THE COURSE

### How long are the lessons?

45 minutes

### What's the average class size?

Average of 12, maximum of 15

### What are the entry levels?

From Intermediate to Advanced  
(see page 10)

### What age do I have to be?

16 is the minimum age

### Where can I study?

See our list of locations on page 56

## ENGLISH FOR BUSINESS

EACH WEEK YOU RECEIVE	
<b>20 English Lessons</b> Reading, writing, listening, conversation, grammar, vocabulary, and pronunciation through an integrated skills approach	21 HOURS
<b>8 English for Business Lessons</b> A range of subjects to develop communication skills for the workplace and business situations	
IN ADDITION TO YOUR LESSONS	
<b>K +clubs Study Groups</b> Access to teacher-led study sessions with guidance and monitoring	5,25+ HOURS
<b>K +tools Online Learning</b> Access to K +tools complementary learning materials	
<b>K +eXtra Online Learning</b> Access to K +eXtra additional learning materials for self-directed study	
HOW LONG?	
Study from 2–17 weeks* (depending on location)	
WHEN CAN I START?	
Classes start every week	

\*English for Business course length is dependent on visa regulations in the destination country and is not suitable for Student Visa holders in Australia.

## INTENSIVE BUSINESS ENGLISH

EACH WEEK YOU RECEIVE	
<b>20 English for Business Lessons</b> A range of subjects to develop communication skills for the workplace and business situations	21 HOURS
<b>8 Specific Skills Lessons</b> Various subjects to help you tailor your program to meet your specific learning needs	
IN ADDITION TO YOUR LESSONS	
<b>K +clubs Study Groups</b> Access to teacher-led study sessions with guidance and monitoring	5,25+ HOURS
<b>K +tools Online Learning</b> Access to K +tools complementary learning materials	
<b>K +eXtra Online Learning</b> Access to K +eXtra additional learning materials for self-directed study	
HOW LONG?	
Study from 2–52 weeks	
WHEN CAN I START?	
Classes start every week	



# EXAMS: PREPARE AND SUCCEED

All Kaplan courses lead to a Kaplan Certificate to demonstrate your English proficiency, but many organizations — whether for university, visa, or job applications — require specific exams to certify your English level or language capabilities.

We at Kaplan are committed to helping you match the right exam to your goals, familiarizing you with the expectations of the exam, and boosting your English skills along the way.

## WHICH EXAM SHOULD YOU TAKE?

**IELTS Exam Preparation:** ideal for students applying for university entry in the United Kingdom, Ireland, Canada, Australia, and New Zealand, or wanting to work in an English-speaking country

**Cambridge Exam Preparation:** ideal for students who want to follow an academic path or communicate at a high level in a professional environment

## CAMBRIDGE EXAM PREPARATION COURSE AND EXAM DATES

START	END	WEEKS	EXAM DATE (ALL PAPER-BASED EXAMS)	NEW ZEALAND	Auckland	AUSTRALIA	Melbourne	Sydney Manly	Sydney City	Perth	Adelaide	Brisbane	Cairns
03 Jan 17	10 Mar 17	10	FCE: Fri 10 Mar. CAE: Sat 11 Mar	✓	✓	✓	✓	✓	✓	✓	✓	✓	✓
16 Jan 17	10 Mar 17	8	FCE: Fri 10 Mar. CAE: Sat 11 Mar	✓	✓	✓	✓	✓	✓	✓	✓	✓	✓
13 Mar 17	02 Jun 17	12	FCE: Tue 06 Jun. CAE: Wed 07 Jun	✓	✓	✓	✓	✓	✓	✓	✓	✓	✓
27 Mar 17	02 Jun 17	10	FCE: Tue 06 Jun. CAE: Wed 07 Jun	✓	✓	✓	✓	✓	✓	✓	✓	✓	✓
10 Apr 17	02 Jun 17	8	FCE: Tue 06 Jun. CAE: Wed 07 Jun	✓	✓	✓	✓	✓	✓	✓	✓	✓	✓
19 Jun 17	25 Aug 17	10	FCE: Thu 24 Aug. CAE: Fri 25 Aug	✓	✓	✓	✓	✓	✓	✓	✓	✓	✓
03 Jul 17	25 Aug 17	8	FCE: Thu 24 Aug. CAE: Fri 25 Aug	✓	✓	✓	✓	✓	✓	✓	✓	✓	✓
04 Sep 17	24 Nov 17	12	FCE: Tue 28 Nov. CAE: Wed 29 Nov	✓	✓	✓	✓	✓	✓	✓	✓	✓	✓
18 Sep 17	24 Nov 17	10	FCE: Tue 28 Nov. CAE: Wed 29 Nov	✓	✓	✓	✓	✓	✓	✓	✓	✓	✓
02 Oct 17	24 Nov 17	8	FCE: Tue 28 Nov. CAE: Wed 29 Nov	✓	✓	✓	✓	✓	✓	✓	✓	✓	✓

Public holiday dates may affect the start date in your chosen school, see inside cover.

# WHICH EXAM SHOULD YOU TAKE?

When exam day comes, we know you'll be feeling confident and ready to do well. Whatever test you're taking, our specialized preparation courses and teaching materials will provide you with all the right strategies to achieve your best possible score.

## TELL ME ABOUT THE COURSE

### How long are the lessons?

45 minutes

### What age do I have to be?

16 is the minimum age

### What's the average class size?

Average of 12, maximum of 15

### Where can I study?

See our list of locations on page 56

## IELTS

### WHY CHOOSE THIS COURSE?

This thorough and adaptable course is excellent preparation for students planning higher education, university entry, or work in other countries. IELTS is the most popular English language qualification particularly if you're heading to Australia, New Zealand, the UK, Ireland, or Canada.

#### EACH WEEK YOU RECEIVE

##### 28 IELTS Preparation Lessons

Verbal skills and test-taking strategies to assist with all sections of the IELTS exam

21 HOURS

#### IN ADDITION TO YOUR LESSONS

##### K+ Study Materials

See pages 14–17 for more details on *K+clubs*, *K+tools* and *K+eXtra*

5.25+ HOURS

#### WHAT ARE THE ENTRY LEVELS?

From Intermediate to Advanced (see page 10)

#### HOW LONG?

Study from 2–24 weeks (depending on location)

#### WHEN CAN I START?

Frequent start dates which vary by location

Also available on an evening timetable in Perth, Sydney City, and Sydney Manly.

A pre-arrival test may be required and can be arranged by your Kaplan representative.

IELTS exam fees are not included in the course fees.

## CAMBRIDGE

### WHY CHOOSE THIS COURSE?

We offer two levels of Cambridge Exam; Cambridge Advanced (CAE) and Cambridge English: First (FCE), so you can choose one suited to your abilities and ambitions. This course will help you towards a certificate accepted by top businesses and educational organizations throughout the world.

#### EACH WEEK YOU RECEIVE

##### 28 Cambridge Exam Preparation Lessons

Verbal skills and test-taking strategies to assist with all sections of the Cambridge exam

21 HOURS

#### IN ADDITION TO YOUR LESSONS

##### K+ Study Materials

See pages 14–17 for more details on *K+clubs*, *K+tools* and *K+eXtra*

5.25+ HOURS

#### WHAT ARE THE ENTRY LEVELS?

From Intermediate to Advanced (see page 10)

#### HOW LONG?

Study from 2–12 weeks (depending on location)

#### WHEN CAN I START?

Frequent start dates which vary by location

Also available on an evening timetable in Sydney City and Perth.

Please note that the 8-week course is integrated into the 12-week program. The Cambridge English Exams are a compulsory part of the Cambridge Exam Preparation course. Additional accommodation may be required to include the official exam date. Exam fees are not included in the course fees.

Kaplan International English are Authorised Paper-based Test Centres in the following locations: Australia: Cairns (AU055), Perth (AU365), Sydney City (AU554), Melbourne (AU556); New Zealand: Auckland (NZ166).



**CAMBRIDGE ENGLISH**  
Language Assessment

Authorised Centre



# ENGLISH FOR ACADEMIC PURPOSES



## WHY CHOOSE THIS COURSE?

- Develop the necessary language skills and learning strategies for tertiary study
- Gain insight into academic expectations in an English-speaking environment
- Build the confidence and knowledge needed to complete assignments and communicate fluently
- Prepare for direct entry into a range of university, college, and partner institute programs in Australia and New Zealand

## ENGLISH FOR ACADEMIC PURPOSES

### EACH WEEK YOU RECEIVE

#### 28 English for Academic Purposes Lessons

Reading, writing, listening, conversation, grammar, vocabulary, and pronunciation through an integrated skills approach

21 HOURS

### IN ADDITION TO YOUR LESSONS

#### K +clubs Study Groups

Access to teacher-led study sessions with guidance and monitoring

#### K +tools Online Learning

Access to K +tools complementary learning materials

5.25+ HOURS

#### K +eXtra Online Learning

Access to K +eXtra additional learning materials for self-directed study

### HOW LONG?

10 weeks per level

### WHEN CAN I START?

Frequent start dates which vary by location (see page 49–52)

## TELL ME ABOUT THE COURSE

### How long are the lessons?

45 minutes

### What's the average class size?

Average of 12, maximum of 15

### What are the entry levels?

Level 1: Intermediate or IELTS 5.0

Level 2: Higher Intermediate or IELTS 5.5

### What age do I have to be?

16 is the minimum age

### Where can I study?

See our list of locations on page 56

# HOPING TO ATTEND A COLLEGE OR UNIVERSITY?

## WE CAN HELP

We have over 250 university and college partners around the world, where we'll help you find the perfect undergraduate, graduate, or vocational program — you'll have plenty of options to choose from!



### UNIVERSITY PLACEMENT SERVICE (UPS)

When applying to one of our university or college partners in Australia or New Zealand, with our University Placement Service (UPS) you will:

- Receive personalized support and advice with your application every step of the way, from enquiry to enrollment.
- Be able to submit your application and obtain a conditional offer from a partner institution before you leave home or after you start your English course.
- Be able to apply to have your Kaplan English level recognized for direct entry into a range of institutions and programs, instead of using an IELTS score.
- Benefit from arranged campus visits and opportunities to meet with staff members from your intended institution.

“I think UPS is a really helpful service that can help international students find out more about universities. My advisor helped me from the very first steps by showing me the best universities for the master’s degree that I wanted to do. He also helped me fill in my application, and finally when I got my acceptance letter he started to ask about the accommodation options to choose a comfortable and suitable one for me.”

**Irjuwan, studied in Bournemouth**



## PATHWAYS TO FURTHER STUDIES

Kaplan offer an extensive range of academic pathway programs from English preparation through to diploma, bachelor degree, and postgraduate programs. We offer the opportunity to continue your Kaplan journey by choosing to study with Kaplan Business School, Murdoch Institute of Technology or Bradford College, or take advantage of the many partnerships we have with top universities and institutions including public providers, private colleges and vocational colleges. Find out more about our Kaplan colleges, our partner institutions and your pathway options over the following pages.

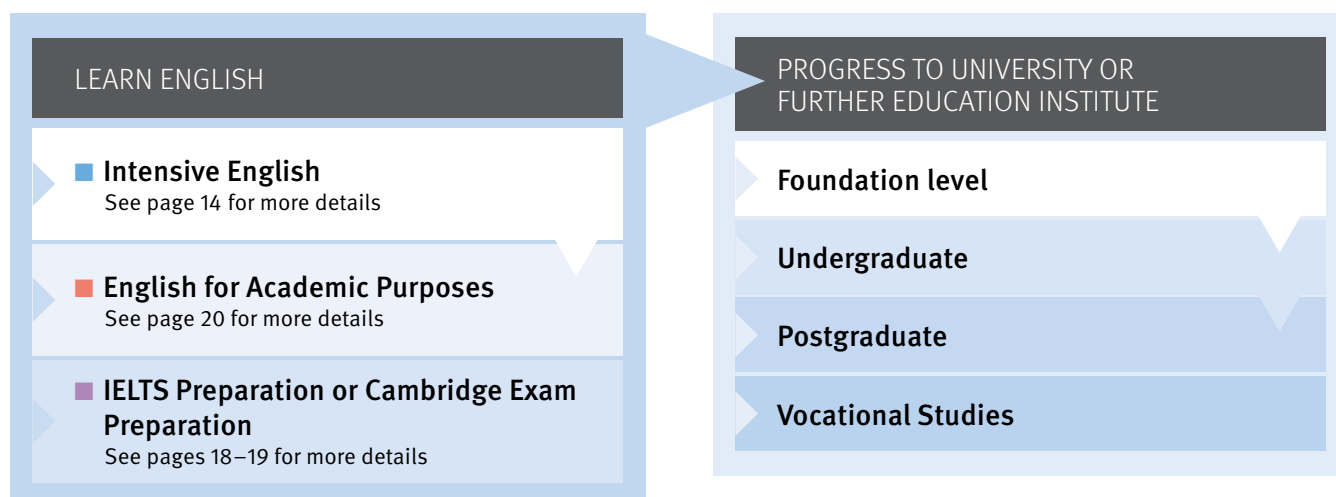


### YOUR ROUTE TO SUCCESS

Depending on your language level, desired program, and the entry requirements of the selected institution, direct entry may be available from our English for Academic Purposes (EAP) or Intensive English (IE) programs. Students who do not meet the EAP entry requirements may start their language development with an Intensive English program beforehand.

“It was my ambition to extend my studies after my Intensive English program, and through Kaplan I was able to start my Diploma at one of their partner providers.”

Larissa, Brazil, studying an Advanced Diploma in Leadership and Management at the Australian Professional Skills Institute



# PATHWAY OPTIONS IN NEW ZEALAND

Take advantage of a range of pathway options from our English for Academic Purposes or Intensive English programs in Auckland. Upon successful completion of your English program to the required standard, you will qualify for direct entry, without an IELTS score, to a huge variety of programs delivered by our pathway partners. Contact your Kaplan representative for more information.



## OUR PATHWAY PARTNERS

<div> <b>AVAILABLE PATHWAY</b>            ● English for Academic Purposes            ■ Intensive English            ▲ Both programs*         </div>		QUALIFICATION LEVEL			
		CERTIFICATE	DIPLOMA	DEGREE	FOUNDATION
PATHWAY PARTNER					
<b>PACKAGED OFFER</b>	■ ACG Norton College Pathway to the University of Auckland				✓
	■ ACG NZIC Pathway to AUT University				✓
	● AUT University Business School A wide range of programs		✓	✓	
	▲ International Travel College Airline, Travel, & Tourism	✓	✓		
	▲ Media Design School Digital & Creative Technology		✓	✓	
	▲ Queenstown Resort College Tourism & Hospitality Management		✓		
	▲ SAE Creative Media Institute Creative Media		✓	✓	
	■ The New Zealand School of Food and Wine Cookery, Hospitality, & Sommelier	✓			
	● Unitec A wide range of programs			✓	
	▲ Whitecliffe College of Arts and Design Arts & Design	✓		✓	

\*In some cases your intended pathway program will determine which English program is required for progression.

\*\*Providing students achieve the required Kaplan level.

†Accredited by the AACSB International (The Association to Advance Collegiate Schools of Business).

## POPULAR PATHWAY

### AUT BUSINESS SCHOOL

Kaplan students can enjoy direct entry into a range of qualifications at AUT Business School without an IELTS Score.\*\*

The AUT Business School is among an elite group of the top 5% of business schools worldwide†. The School aims to give students a variety of ways to develop their professional skills and experience, and also has a dedicated Careers Advisor to help students develop effective career management skills.

### POPULAR PROGRAMS

- Bachelor of Business (Honors)
- Master of Applied Finance
- Master of Global Business
- Master of Marketing
- Master of Professional Accounting
- Graduate Diploma in Business
- Postgraduate Diploma in Business
- Master of Business Administration
- Master of Philosophy
- PhD





# PATHWAY OPTIONS IN AUSTRALIA

See where your English course could take you next. Here in Australia, Kaplan have a wide variety of pathway options available, meaning you are sure to find something to suit your academic and career goals. Find out more about how to apply, our partners and their programs on pages 24–28.



## PACKAGED OFFERS

Apply for both your English program and course of further study at the same time and secure a packaged offer. Kaplan is able to apply on our students' behalf to our pathway partners listed opposite. Conditions apply so please contact us for further information.

## RESULTS RECOGNITION

Where packaged offers are not available, our listed partner institutes will recognize our English for Academic Purposes or Kaplan Intensive English certificates, however Kaplan may not be able to apply to the partner institute on the students' behalf\*.

\*Please note a letter of recommendation may also be required confirming the student has reached the required IELTS equivalence in Intensive English.

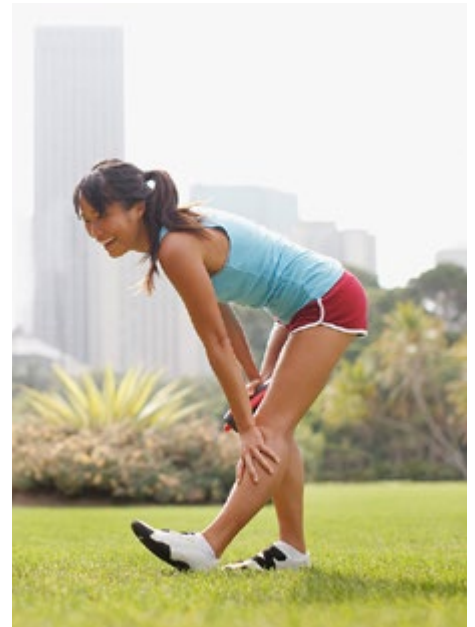


## OUR PATHWAY PARTNERS

		QUALIFICATION LEVEL			
		CERTIFICATE	DIPLOMA	DEGREE	FOUNDATION
AVAILABLE PATHWAY					
● English for Academic Purposes					
■ Intensive English					
▲ Both programs*					
PATHWAY PARTNER					
PACKAGED OFFER	■ Australia Professional Skills Institute Aged Care, Cookery, Hospitality, & Business Management	✓	✓		
	▲ Bradford College – see page 28 Pathway to the University of Adelaide				✓
	● Central Queensland University (Cairns) A wide range of programs		✓	✓	✓
	▲ College of Sports & Fitness Sports Coaching	✓	✓		
	▲ Kaplan Business School – see page 26 Accounting, Business, Management, Hospitality, & Marketing	✓	✓	✓	
	▲ Le Cordon Bleu Hotel Management, Hospitality, & Culinary Arts	✓	✓	✓	
	■ Murdoch Institute of Technology – see page 27 Pathway to Murdoch University	✓	✓		✓
	● Murdoch University A wide range of programs			✓	
	▲ TAFE International Western Australia A wide range of programs	✓	✓		
	● TAFE NSW A wide range of programs	✓	✓		
	● TAFE Brisbane A wide range of programs	✓	✓		
	▲ TAFE SA A wide range of programs	✓	✓		
	■ TAFE North A wide range of programs	✓	✓		✓
	■ Toni & Guy Sydney School of Hairdressing Hairdressing & Salon Management	✓			
	▲ William Angliss Institute Hospitality, Tourism, & Culinary arts	✓	✓	✓	
RESULTS RECOGNIZED	● Blue Mountains International Hotel Management School Hotel Management, Hospitality, & Culinary Arts	✓	✓	✓	
	● Central Queensland University A wide range of programs		✓	✓	✓
	■ EIM Training Early Childhood Education & Care	✓	✓		
	■ Endeavour College of Natural Health Natural health programs	✓	✓	✓	
	● International College of Management Sydney Business, Hospitality, & Tourism		✓	✓	
	● SIBT University pathway program	✓	✓		
	● University of South Australia A wide range of programs			✓	
	● Western Sydney University A wide range of programs		✓	✓	✓

Our range of pathway agreements and packaged offers varies by Kaplan location. Students will be required to meet the academic entry requirements of the pathway institution. Terms and conditions of application apply.

\*In some cases your intended pathway program will determine which English program is required for progression.





Industry-focused, globally accepted qualifications



# KAPLAN BUSINESS SCHOOL

Kaplan Business School (KBS) is a specialist provider of accounting, business, and management qualifications. Drawing on the global expertise of Kaplan, Inc., KBS offers courses that are career-focused, providing students with the practical skills and knowledge they need to pursue further tertiary study, attain professional certification, and achieve their goals.

## TELL ME MORE

### What are the entry levels?

Successful completion of year 12 or equivalent at minimum plus English from IELTS 5.5 to 6.0 depending on program. See website for more information.

### When can I start?

March, July, November

### Where can I study?

Adelaide, Brisbane, Melbourne, and Sydney

## POPULAR COURSES

While pathways from our Kaplan International English (English for Academic Purposes and Intensive English) programs exist to all Kaplan Business School qualifications, here are some of the most popular courses.

## BACHELOR OF BUSINESS

Learn to work collaboratively while improving your analytical and communication skills across a range of business functions. These degrees provide the theoretical and practical skills necessary to start a successful business career.

### HOW LONG?

2 years full time, 24 subjects, 6 trimesters (accelerated)

3 years full time, 24 subjects, 9 trimesters (standard)

*Ask us about our integrated internships.*

## MASTER OF ACCOUNTING

This course will improve your general management skills and knowledge related to contemporary accounting theory, issues, and practices, providing you with a competitive edge in this industry.

### HOW LONG?

2 years full time, 16 subjects, 6 trimesters

## MASTER OF BUSINESS ADMINISTRATION

Develop your knowledge across traditional business administration disciplines and gain business insight valued highly by prospective employers. Expand your networks and learn to lead and inspire others in a global business environment.

### HOW LONG?

2 years full time, 15 subjects, 6 trimesters

## AVAILABLE COURSES

- Diploma of Business
- Bachelor of Business
- Bachelor of Business (Accounting)\*
- Bachelor of Business (Marketing)
- Bachelor of Business (Hospitality and Tourism Management)
- Graduate Certificate in Business Administration
- Graduate Diploma of Business Administration
- Master of Business Administration
- Graduate Certificate in Accounting
- Master of Professional Accounting\*
- Master of Accounting\*

\*This program is accredited by CPA Australia and recognized by the Chartered Accountants Australia and New Zealand.

A pathway to Murdoch University

# MURDOCH INSTITUTE OF TECHNOLOGY

Murdoch Institute of Technology (MIT) provides students with the academic foundations required for undergraduate studies at Murdoch University, Perth. Located on-campus, both international and Australian students benefit from studying together within a supportive yet academically challenging learning environment and enjoy access to a wide range of campus facilities.



## TELL ME MORE

### What are the entry levels?

Successful completion of Year 11/12 or international equivalent + English from IELTS 5.5 depending on selected course

### When can I start?

February, June, October

### Where can I study?

Perth

## YOUR DEGREE

Students will be supported in their selection of the appropriate study stream and units in line with their destination degree at Murdoch University. Choose from around 100 undergraduate degrees with a range of majors in the following categories:

- Arts
- Business
- Education
- Engineering
- Law
- Nursing
- Science

## MURDOCH UNIVERSITY PREPARATION COURSE

Successful completion of this program leads to entry into the first year of a range of bachelor degree programs at Murdoch University. Popular degree majors include Animal Science, Business, Chiropractic Science, Computer Science, Education, Hospitality and Tourism Management, Nursing, and Psychology.

### HOW LONG?

1–3 trimesters (depending on academic transcript)  
(15 weeks per trimester)

## DIPLOMA PROGRAMS

Our diploma programs are designed in collaboration with Murdoch University and provide a seamless pathway to Year 2 of selected degrees. Choose from our three diploma programs with direct pathways to popular degree majors including Accounting, Economics, Human Resource Management, Marketing, Games Technology, Journalism, and Public Relations.

### HOW LONG?

2–3 trimesters (depending on study load)  
(15 weeks per trimester)



## AVAILABLE COURSES

- Murdoch University Preparation Course
- Diploma of Business
- Diploma of Information and Communication Technology
- Diploma of Communication and Media Studies
- General English
- English for Academic Purposes

*Additional progression prerequisites may apply.  
Ask your Kaplan representative for pathway details.*

Kaplan Higher Education Pty Ltd. ABN 85 124 217 670, trading as Murdoch Institute of Technology. Registered as a Higher Education Provider (PRV 12030). CRICOS Provider Code 03127E.

[facebook.com/mitperth](https://facebook.com/mitperth)

For more information: [murdochinstitute.wa.edu.au](http://murdochinstitute.wa.edu.au)



A pathway to the University of Adelaide

# BRADFORD COLLEGE

Bradford College provides students with a pathway to undergraduate studies at the University of Adelaide—consistently ranked in the top 1% of universities worldwide and one of Australia's prestigious Group of Eight universities. Located in the heart of the city of Adelaide, the College provides the thorough preparation, guidance, support, and encouragement needed to help students fulfill their academic potential.



TELL ME MORE

## What are the entry levels?

Successful completion of Year 11/12 to the required standard or international equivalent + English from IELTS 5.5 to IELTS 6.0 depending on selected program

## When can I start?

February/March, July, October

## Where can I study?

Adelaide

## YOUR DEGREE

The University of Adelaide offers Bradford College students a choice from a wide range of bachelor degrees:

- Agriculture
- Architectural Design
- Business
- Computer Science
- Dentistry
- Engineering
- Food Science
- Medicine
- Nursing
- Psychology
- Science
- Veterinary Science
- Viticulture

## FOUNDATION STUDIES PROGRAM

Successful completion of this program leads to entry into the first year of a bachelor degree program at the University of Adelaide. Students will be advised on appropriate stream and subjects of study based on their choice of degree and the relevant University entry requirements.

### HOW LONG?

34–40 weeks (depending on program)

## DEGREE TRANSFER PROGRAMS

Students who successfully complete their Degree Transfer program and meet the necessary prerequisites will secure a place in the second year of their selected undergraduate course at the University of Adelaide. The recommended duration will depend on a student's prior learning. Subject choices will depend on intake and destination degree.

### HOW LONG?

9–15 months (depending on program)

### AVAILABLE COURSES

- Foundation Studies Program
  - Standard
  - Accelerated
- Degree Transfer Program
  - Extended
  - Standard
  - Accelerated
- General Academic English

Professional experience and paid employment

## CAREER PROGRAMS AND SERVICES

Take advantage of some of our other services, including our career-focused program additions that will help you gain practical skills and valuable experience in the workplace. Our dedicated team of experts will be able to help you at every stage of your program.

### TELL ME MORE

#### **When can I start?**

Every Monday

#### **How old do I need to be?**

18–30 years

#### **Where can I study?**

Auckland, New Zealand

#### **Visa requirements**

Paid Work and Study and Internship durations are subject to the relevant visa regulations.

Minimum English entry requirements apply — ask your Kaplan representative for further information.



### **FREE JOB CLUB EVERY WEEK**

Receive help with writing a resume or cover letter, looking for work, or preparing for interviews. Available throughout Australia and New Zealand.

### **INTERNSHIPS**

Improve your fluency while adding an international dimension to your CV and, gaining a competitive edge that will be valuable in advancing your career. Combine 2–24 weeks of your choice of English study with a full-time unpaid professional internship placement of 8–50 weeks. You will receive expert help in preparing your CV and cover letter prior to placement, plus support throughout.

### **PAID WORK AND STUDY (OPUS ENGLISH)**

Improve your English skills during an Intensive Academic Semester or Year, combining your studies with part-time paid work for the opportunity to practice what you are learning. We also offer a Paid Work and Study option for working holiday visa holders where you can study 12-weeks and then work full-time. You will benefit from group coaching and individual meeting preparation in addition to application support and assistance.

“Completing an internship in New Zealand was an amazing experience. The Kaplan staff really cared and worked hard to place me in a good role. I worked for an automation company for six months. Not only did my English improve by talking to workmates but it also taught me about business. It was a great way to meet new people.”

**Akane, Japan, studied in Auckland**



Tailored programs for groups and juniors

## ENGLISH PACKAGES

Kaplan can cater to individuals and groups of all ages. Our experienced and dedicated staff ensure students enjoy a balanced program of study and adventure.



### GROUP STUDY TOURS

#### WHY CHOOSE THIS COURSE?

Our group study tours are designed to provide an opportunity to improve your English language skills in a relaxed environment. They can be tailored to suit any specific activity interests, accommodation requirements, duration, or budget.

#### HOW LONG?

1 week minimum

#### WHEN CAN I START?

All year round

#### TELL ME ABOUT THE COURSE

##### **What are the entry levels?**

From Elementary to Advanced

##### **How old do I need to be?**

Australia: 12+, New Zealand: 14+

##### **Where can I study?**

All locations throughout Australia and New Zealand

##### **What visa do I need?**

Not suitable for Student Visa holders

### ENGLISH FOR YOUNG LEARNERS

#### WHY CHOOSE THIS COURSE?

As a young learner you can improve your language skills in a safe and supportive environment while enjoying tailored classroom, social, and cultural activities designed to provide a fun educational experience. This package includes tuition and accommodation.

#### HOW LONG?

1 or 2 weeks

#### WHEN CAN I START?

6-night program: 30 July – 5 August or 6 August – 12 August  
13-night program: 30 July – 12 August

#### TELL ME ABOUT THE COURSE

##### **What are the entry levels?**

From Elementary to Advanced

##### **How old do I need to be?**

12–15 years

##### **Where can I study?**

Australia: Cairns

#### YOUR STUDY TOUR

Study tour groups can enjoy an exciting range of activities including:

- Sightseeing and adventure tours
- Museum and gallery visits
- Wildlife park, aquarium, and zoo visits
- Walking or cycling tours
- Barbecue or picnic afternoons
- Sports such as soccer, volleyball, and mini-golf
- Film or disco nights
- Trivia and quiz competitions
- Arts and crafts



Learn more than a language

## ENGLISH PLUS

Kaplan also offers an exciting range of specialist programs and supplements providing an opportunity to develop skills in other areas. These options allow you to combine English language classes with other learning experiences and activities.

### ENGLISH PLUS SURFING: MANLY

#### WHY CHOOSE THIS COURSE?

Study English by the beach and learn to surf with Manly Surf School. Surf lessons can be booked alongside any of our English programs. Make new friends and learn a favorite Australian pastime.

#### TELL ME MORE

##### How long is the course?

2+ weeks

##### When can I start?

Every Monday

##### What are the entry levels?

Open to all

##### How old do I need to be?

16 is the minimum age

##### What visa do I need?

The surf supplement can be booked alongside any English course. The English course selected will determine visa requirements.



### DEMI PAIR: PERTH

#### WHY CHOOSE THIS COURSE?

Study an English course of your choice and outside of class work as an au pair for 15 hours per week for your host family. This program includes up to 4 weeks of Demi Pair training and a minimum 12-week placement with a host family.

#### TELL ME MORE

##### How long is the course?

16+ weeks

##### When can I start?

Every Monday

##### What are the entry levels?

Intermediate

##### How old do I need to be?

18 is the minimum age

##### What visa do I need?

Student or Working Holiday Visa

Please note this program is only available to female students.



### ENGLISH PLUS RUGBY: AUCKLAND

#### WHY CHOOSE THIS COURSE?

Combine learning English with high performance rugby training in New Zealand. Study a minimum of 2 weeks Vacation English and enjoy improving your game while building self-confidence, leadership, and teamwork skills.

#### TELL ME MORE

##### How long is the course?

2+ weeks

##### When can I start?

Every Monday

##### What are the entry levels?

From Elementary to Advanced

##### How old do I need to be?

16 is the minimum age

### ENGLISH PLUS DIVING: CAIRNS

#### WHY CHOOSE THIS COURSE?

Improve your English with a Vacation English course, and learn how to safely dive the world's most beautiful reefs on a 5-day PADI Open Water Dive course.

#### TELL ME MORE

##### How long is the course?

2 weeks

##### When can I start?

Every Monday

##### What are the entry levels?

From Elementary to Advanced

##### How old do I need to be?

18 is the minimum age

##### What visa do I need?

Not suitable for Student Visa holders



# MEET YOUR NEW FRIENDS

Whether you want to improve your English skills for your education, for your career, to meet new people, or to travel the world, find out what our previous students have to say about their time at Kaplan.

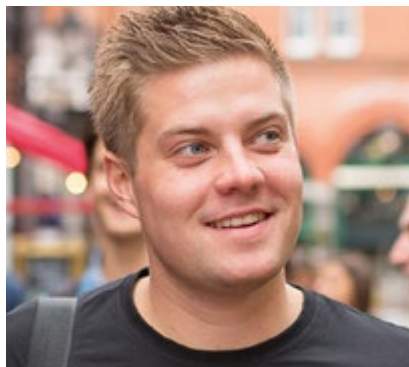
## STUDY AT KAPLAN

 *Germany*

### MARIS

WILL RETURN TO GERMANY TO HIS NEW JOB THAT REQUIRES FLUENCY IN ENGLISH

“Learning English has been the most important part of my Kaplan Experience. The lessons are well designed and the new technology used in the classroom makes learning new languages lots of fun.”



 *South Korea*

### HEEJUNG

WILL TAKE THE IELTS EXAM FOR HER CAREER

“If I speak English very well, I can overcome the language barrier because English is an international language.”



 *Saudi Arabia*

### ZYIAD

WILL RETURN TO MEDICAL SCHOOL IN SAUDI ARABIA

“Kaplan International is known as one of the best English language schools. I personally know a lot of people who studied at Kaplan, and their opinions of the school were excellent. I took their advice and have truly enjoyed a very successful experience.”



 *Chile*

### BELTRÁN

NEEDS ENGLISH FOR HIS CAREER

“The experience at Kaplan will help anyone grow, see life in a big city, and pick up the language. I think it’s very important to have an experience like this for when it comes time to look for a job, and not only for the language but to learn about new cultures.”



 *Angola*

### ZAIRA

IS TRAINING TO BE A LAWYER

“English is a universal language, and as a lawyer I’ll need it to interact with my clients and have the possibility to understand and fix their issues.”

SUCCEED IN  
YOUR CAREER

## IMMERSE YOURSELF IN A NEW CULTURE

 *Poland*

### **BETINA**

WILL GO BACK  
TO POLAND AND FINISH  
HER SCHOOLING

“I thought it would be a great experience to go abroad, practice my English, and connect with new people, Kaplan offered me this opportunity.”



 *Turkey*

### **AYBUKE**

WANTS TO TRAVEL THE  
WORLD

“I enjoyed meeting new people and traveling a lot during my time at Kaplan.”



 *Japan*

### **DAIKI**

WILL CONTINUE TO STUDY ENGLISH  
IN JAPAN

“New students might be afraid to leave their own country but learning about new cultures and meeting many people from different countries is an awesome experience. My world has expanded since studying with Kaplan.”

 *Colombia*

### **PABLO**

WANTS TO CONTINUE  
STUDYING AND  
DEVELOPING NEW SKILLS

“English will be a useful tool when it comes to university, work, and for my social life. I will be able to understand international people and be more outgoing.”



 *Italy*

### **BRUNELLA**

PLANS TO EARN A MASTER'S DEGREE IN  
CLINICAL PSYCHOLOGY

“I have to take the IELTS exam, as next year I graduate and would like to study a master's degree.”



## A GREAT PLACE TO STAY

Where you live while you study will make all the difference to the experience you have, the friends you make, and your sense of comfort and security. We know it's an important part of your decision. Kaplan is committed to finding the highest-quality student residences and homestays — those where you'll feel the most at home.

### BE INDEPENDENT, MAKE FRIENDS



### WHY WOULD I LIKE A STUDENT RESIDENCE?

Living alongside other students is the perfect way to make friends and share ideas and experiences (as well as recipes!) from around the world. Most residences are self-catering, so it will be your choice to cook or eat out at the local restaurants and cafés. You can enjoy your independence as most locations offer options such as residences, apartments, or hostels with a choice of single, twin, or dormitory-style rooms.



"The residence was modern, cozy, and full of students. This is a great factor, as it allows all students to get together in the common areas and enhance their language skills while enjoying good company."

Carmela Nargiso, Italy



FEEL WELCOMED, PRACTICE YOUR ENGLISH



## WHY WOULD I LIKE A HOMESTAY?

Living in a homestay gives you the chance to practice your English every day in a relaxed atmosphere and enjoy the warmth and comforts of a real home. You'll have breakfast and dinner with your hosts and fully immerse yourself in a new culture. All of our homestays are regularly inspected to ensure they're comfortable and welcoming, and we choose hosts we know are well-suited to caring for international students.



"I had a host family who treated me like one of their own, which helped me to overcome my homesickness. I was able to improve my knowledge of their culture and ways of life, but of course this meant I had the chance to use my English more effectively, which helped me to develop my language skills in speaking quickly."

Khaled Saad Alharbi, Saudi Arabia



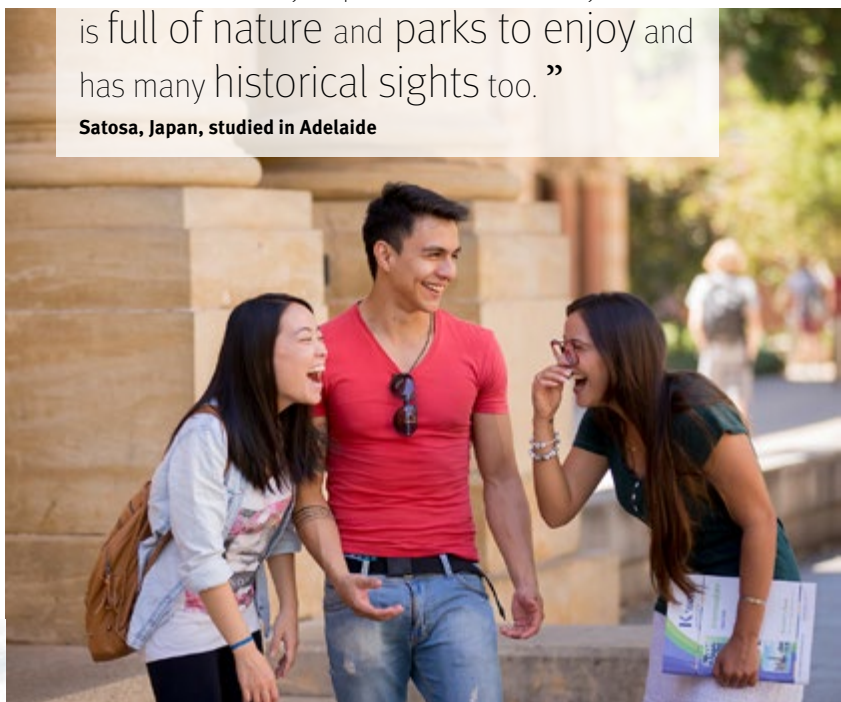


# SOAKING UP THE CULTURE

One of the best things about studying in another country is experiencing a brand new culture. You will find new and exciting experiences on your doorstep — landmarks, activities, and amazing places to visit. You'll learn and see so much more than on any vacation. We offer every opportunity to enjoy an exciting social life outside the classroom by organizing activities, events, and weekend trips. Our social program will help you make the most of your stay and allow you to make memories to last a lifetime.

“Adelaide is so easy to get around, me and my friends can easily explore the whole city, which is full of nature and parks to enjoy and has many historical sights too.”

**Satosa, Japan, studied in Adelaide**



“Manly is a top spot because everything is in one place: shops, cafés, restaurants, and entertainment. I especially love the ocean view we have from class!”

**Sarka, Czech Republic, studied in Sydney**



“I love Cairns because it's small, it isn't crowded, and the weather is fantastic and similar to my city.”

**Ana, Brazil, studied in Cairns**



“My favorite place in Brisbane is the Southbank Parklands along the river. It is a beautiful place to relax and study with friends during the nice weather.”

**Giulia, Germany, studied in Brisbane**





“Melbourne is such a multicultural city; I love trying the diverse range of food and drink.”

**Hikaru, Japan, studied in Melbourne**

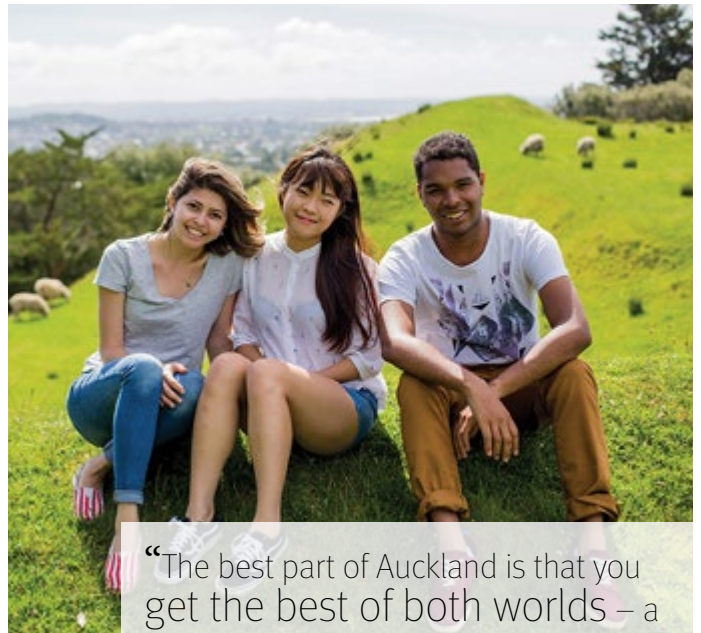
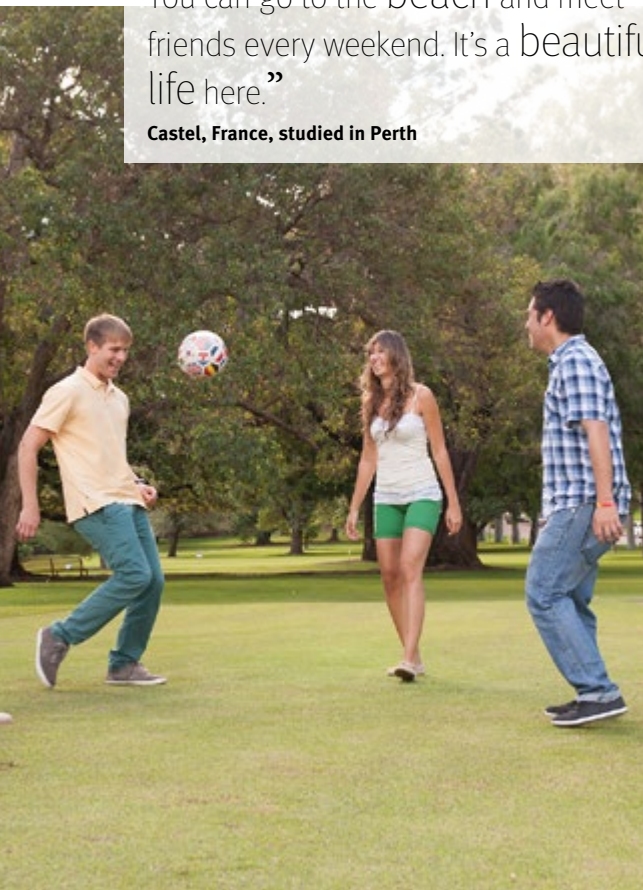


“I enjoy going to Chinatown in the city as there is a lot of delicious food, and I think you should see the Sydney Opera House and Harbor Bridge.”

**Huixan, China, studied in Sydney**

“Summer in Perth is just amazing. You can go to the beach and meet friends every weekend. It’s a beautiful life here.”

**Castel, France, studied in Perth**

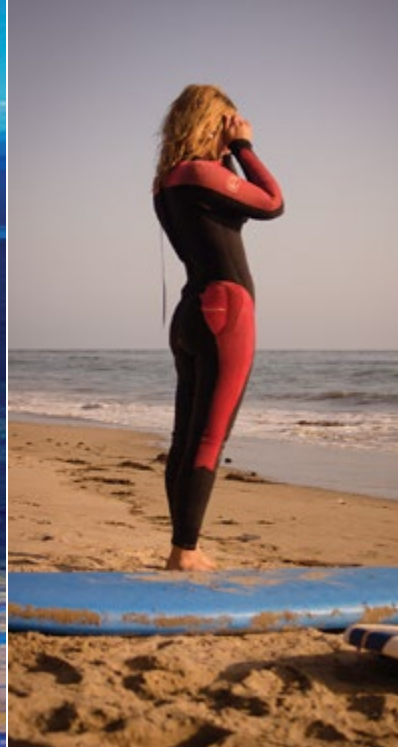


“The best part of Auckland is that you get the best of both worlds – a massive city and natural beauty. When it came to activities hosted by Kaplan, I enjoyed all of them, such as Piha Beach, rock climbing, and the trampoline park.”

**Gabriela, Venezuela, studied in Auckland**

**#KAPLANEXPERIENCE** SEE WHAT OTHER KAPLAN STUDENTS ARE DOING AND SHARE YOUR OWN EXPERIENCES!





## WHERE WILL YOU GO?

Where have you always dreamed of going? Kaplan International has 8 schools in Australia and New Zealand. Whether you're looking for sun and sand, the bustle of a major city, breathtaking natural beauty or a tropical paradise, you're sure to find the perfect destination amongst our wide range of choices.

Find yourself in the heart of the economic capital of Sydney, get a taste of beach culture in Manly or Perth, or lose yourself in the untouched natural beauty of Auckland, the cultural diversity of Melbourne, or the education hub of Adelaide .

**In the following pages, find your new home.**





# NEW ZEALAND AND AUSTRALIA

Pick from 8 stunning and unique destinations across Australia and New Zealand, each offering a welcoming climate, the perfect mix of a bustling city and relaxed lifestyle, and unparalleled access to a selection of natural and man-made wonders.

## CONTENTS

40	Auckland
41	Melbourne
42	Sydney Manly
43	Sydney City
44	Perth
45	Adelaide
46	Brisbane
47	Cairns



# AUCKLAND

BEST FOR A BEAUTIFUL HARBOR CITY THAT OFFERS RICH HERITAGE AND FANTASTIC SCENERY

AUCKLAND OFFERS A WIDE RANGE OF EXCITING ACTIVITIES SUCH AS SKYDIVING AND BUNGY JUMPING.

Situated between two harbors featuring stunning bays, nature reserves, and beaches, the city features a multicultural mix of restaurants, cafés, and energetic nightlife. While exploring New Zealand further, you will find everything from amazing beaches, lakes, and mountains, to glaciers and volcanoes. Our school is set between the Domain, a beautiful public park, and the lively Newmarket district. There are multiple bus stops near the school and train stations within walking distance.

10 Titoki Street,  
Parnell, Auckland  
1052 New Zealand


+64 (0)9 307 6507

[www.kaplan.to/auckland](http://www.kaplan.to/auckland)


See what we're up to on  
Facebook:


[facebook.com/kicauckland](https://facebook.com/kicauckland)


## SCHOOL


 School size


 WiFi


 K+ curriculum


 Interactive whiteboards

 Library


 Student lounge

 Multimedia lab

 Garden/outdoor area

 Test center: Cambridge

## ACCOMMODATION

 Homestay

 Residence

## THINGS TO SEE AND DO

- Climb to the top of Mount Eden for an amazing view of Auckland
- Go black water rafting through the caves of Waitomo
- Go shopping in the fashionable Parnell and Newmarket districts



# MELBOURNE

BEST FOR A COSMOPOLITAN, SPORTY CITY WITH A FAMOUS SHOPPING AND ARTS SCENE

STYLISH, ARTISTIC, AND VIBRANT, MELBOURNE IS PROUD OF ITS PLACE AS ONE OF AUSTRALIA'S MOST CREATIVE CITIES.

It's a wonderfully diverse location that mixes grand, gold-rush architecture with edgy street art, fascinating museums, and a bustling nightlife. Our school is located in the heart of the Melbourne Docklands, close to many shops and restaurants. All of the city center's attractions are in easy reach, with free city trams running regularly and bus stops nearby.




Level 5,  
370 Docklands Drive  
Docklands, VIC 3008

+61 (0)3 9626 4550


[www.kaplan.to/melbourne](http://www.kaplan.to/melbourne)


See what we're up to on  
Facebook:  
[facebook.com/kicmelbourne](https://facebook.com/kicmelbourne)


## SCHOOL


 School size

 WiFi


 K+ curriculum


 Interactive whiteboards


 Library

 Student lounge


 Multimedia lab

 Cafeteria

 Disabled access

 Test center: Cambridge

## ACCOMMODATION

 Homestay

 Residence

## THINGS TO SEE AND DO

- Shop in the many malls and boutiques
- Take a trip down the Great Ocean Road or to Phillip Island to see the world-famous Penguin Parade
- Enjoy Melbourne's café culture and laneways or visit St Kilda's Luna Park



Kaplan International (Melbourne & Adelaide) Pty Ltd., ABN 90 129 017  
385, CRICOS 03008A





# SYDNEY

## MANLY

BEST FOR BEACHFRONT LOCATION, FANTASTIC WEATHER, AND PROXIMITY TO THE CITY

OUR SCHOOL IS RIGHT ON THE BEACHFRONT IN THE IDYLIC SURROUNDINGS OF MANLY BEACH, ONE OF SYDNEY'S BEST BEACH LOCATIONS.

The location offers ocean views and easy access to central Sydney by ferry. Enjoy the sea breeze after class as you sit back in one of the many outdoor cafés, restaurants, and shopping areas not far from our school. There are numerous bus stops close by and the ferry at Manly Wharf is only a short walk away.


Level 2, 30–32 South Steyne, Manly, NSW 2095

+61 (0)2 9976 2422

[www.kaplan.to/manly](http://www.kaplan.to/manly)

See what we're up to on Facebook:  
[facebook.com/kicsydneymanly](https://facebook.com/kicsydneymanly)

### SCHOOL


 School size

 WiFi


 K+ curriculum


 Interactive whiteboards

 Library


 Student lounge

 Multimedia lab

 Garden/outdoor area

 Surf rack

### ACCOMMODATION

 Homestay

 Residence

### THINGS TO SEE AND DO

- Study, play sport, or learn to surf at Manly Beach, which is just across the road from the school
- Visit Taronga Zoo and learn about Australian wildlife
- Take a ferry ride across the iconic Sydney Harbor

Kaplan International (Manly) Pty Ltd.,  
ABN 93 098 348 844, CRICOS 02362B



# SYDNEY

## CITY

BEST FOR ICONIC LANDMARKS, STUNNING BEACHES, AND A VIBRANT CULTURE

STEP OUTSIDE OUR SYDNEY SCHOOL AND YOU'LL FIND YOURSELF IN THE HEART OF AUSTRALIA'S MOST DYNAMIC CITY.

Our school is only a walk away from many of its iconic landmarks and attractions. Sydney boasts an active nightlife, amazing restaurants and cafés, and great shopping, plus art galleries, museums, and the spectacular Sydney Opera House and Harbor Bridge. Sydney's Hyde Park and main shopping districts are all just a short walk from our centrally located school, with numerous bus stops and train stations close by.



98–104 Goulburn Street  
Sydney, NSW 2000


+61 (0)2 8268 4900

[www.kaplan.to/sydney](http://www.kaplan.to/sydney)


See what we're up to on  
Facebook:


[facebook.com/kicsydney](https://facebook.com/kicsydney)

### SCHOOL


 School size

 WiFi


 K+ curriculum


 Interactive whiteboards


 Library

 Student lounge


 Multimedia lab

 Disabled access

 Garden/outdoor area

 Test center: Cambridge

### ACCOMMODATION

 Homestay

 Residence

### THINGS TO SEE AND DO

- Swim and relax at the world-famous Bondi Beach
- Explore the many local craft markets
- Take a trip to the scenic Blue Mountains



Kaplan International English (Australia) Pty  
Ltd., ABN 31 003 631 043, CRICOS 01165D





# PERTH

BEST FOR ENJOYING THE SUNSET OVER TURQUOISE WATERS FROM THE WHITE SAND OF AUSTRALIA'S WEST COAST

ENJOY RELAXED LIVING, FINE FOOD, AND SUNNY DAYS, IN ADDITION TO SOME OF THE MOST BEAUTIFUL BEACHES AND SUNSETS IN THE WORLD.

The city of Perth and the surrounding area offer plenty of opportunity to enjoy the beautiful weather, explore local nature reserves, or enjoy walking, hiking, cycling, water sports, or any of the countless other activities available. Located near shopping, restaurants, theaters, and an AFL football oval, our Perth school is a ten-minute walk from Kings Park, the largest inner-city park in the world. There are numerous bus stops moments from the school.


1325 Hay Street  
West Perth, WA 6005

+61 (0)8 9322 4136


[www.kaplan.to/perth](http://www.kaplan.to/perth)

See what we're up to on Facebook:  
[facebook.com/kicperth](https://facebook.com/kicperth)

## SCHOOL


 School size

 WiFi

 K+ curriculum

 Interactive whiteboards


 Library

 Student lounge

 Multimedia lab

 Test center: Cambridge

## ACCOMMODATION

 Homestay

 Residence

## THINGS TO SEE AND DO

- Take a trip to the beautiful Rottnest Island to see the distinctive quokkas native only to the island
- Visit the Swan Valley wine region and the Caversham Wildlife Park
- Explore the Western Australia Museum and art galleries downtown

Kaplan International (Perth) Pty Ltd.,  
ABN 76 079 200 212, CRICOS 01784K



# ADELAIDE

BEST FOR RELAXED CITY WHERE YOU CAN ENJOY  
THE SUNNY COAST OF SOUTH AUSTRALIA

ADELAIDE IS LOVED FOR ITS  
MULTICULTURAL FLAVOR, A  
SEEMINGLY NEVER-ENDING  
PROCESSION OF FESTIVALS  
AND EVENTS, AND AN AIR OF  
COOL SOPHISTICATION.

Its great music scene and open,  
airy feel lends itself to relaxing  
strolls and exploration. Our school  
is set in the heart of Adelaide's  
bustling central business district,  
conveniently located near the  
central train station.










Level 1, 22 Peel Street  
Adelaide, SA 5000

+61 (0)8 8215 4110



[www.kaplan.to/adelaide](http://www.kaplan.to/adelaide)

See what we're up to on  
Facebook:  
[facebook.com/kicadelaide](https://facebook.com/kicadelaide)

## SCHOOL

-  School size
-  WiFi
-  K+ curriculum
-  Interactive whiteboards
-  Library
-  Student lounge
-  Multimedia lab

## ACCOMMODATION

-  Homestay
-  Residence

## THINGS TO SEE AND DO

- Check out one of the many music and arts events in the capital of Australia's aptly nicknamed "Festival State"
- Tour the many nearby vineyards in areas such as the famous Barossa Valley
- Visit the pristine Kangaroo Island, Australia's third largest island and home to a wide range of native wildlife



Kaplan International (Melbourne &  
Adelaide) Pty Ltd., ABN 90 129 017 385,  
CRICOS 03008A





# BRISBANE

BEST FOR A MODERN AND INTERNATIONAL LOCATION  
THAT OFFERS A BEAUTIFUL NATURAL BACKDROP

ON THE RISE AS A PLACE TO  
VISIT AND STUDY, BRISBANE IS  
A GREEN CITY WITH AN EVER-  
GROWING LIST OF **FESTIVALS AND  
SPORTING EVENTS**.

Enjoy the great climate and take a ferry trip over the river to explore South Bank, home to Brisbane's world-class galleries and entertainment, or head to nearby Moreton Island and see if you can spot passing whales, turtles, and dolphins. Our school is situated on the fringe of the city in Spring Hill, and provides easy access to all of Brisbane's main attractions, with bus stops and a train station close to the school.

Level 3,  
252 St Pauls Terrace  
Spring Hill, Brisbane,  
QLD 4000

+61 (0)7 3872 3888

[www.kaplan.to/brisbane](http://www.kaplan.to/brisbane)

See what we're up to on  
Facebook:  
[facebook.com/kicbrisbane](https://facebook.com/kicbrisbane)

## SCHOOL

**S** School size

**WiFi**

**K+** K+ curriculum

**Interactive whiteboards**

**Library**

**Student lounge**

**Multimedia lab**

**Garden/outdoor area**

## ACCOMMODATION

**Homestay**

**Residence**

## THINGS TO SEE AND DO

- Meet and learn about some of Australia's wildlife at the Lone Pine Koala Sanctuary
- Climb Brisbane's iconic Story Bridge
- Eat, drink, and relax in and around South Bank and City Beach

Kaplan International (Brisbane) Pty Ltd.,  
ABN 81 097 629 073, CRICOS 02369F



# CAIRNS

BEST FOR YEAR-ROUND TROPICAL WEATHER,  
WHERE RAINFOREST MEETS SPARKLING CORAL REEFS

A CITY FULL OF ADVENTURE,  
CAIRNS IS THE GATEWAY  
TO THE STUNNING GREAT  
BARRIER REEF, THE TROPICAL  
DAINTREE RAINFOREST, AND  
CAPE TRIBULATION.

It's the perfect place to enjoy  
dazzling sunshine and crystal clear  
water. Why not try scuba diving or  
snorkeling, a bush hike, or enjoy  
the famous Kuranda Skyrail with  
panoramic views over the rainforest  
canopy. Centrally located, our school  
is a short walk from the waterfront  
and the largest shopping center in  
Cairns. There are several bus stops  
nearby, and it is very easy to travel  
around the city by bicycle.



## THINGS TO SEE AND DO

- Snorkel or scuba dive in the Great Barrier Reef
- See native wildlife at Hartley's Crocodile Farm
- Relax, swim, or take a free exercise class at the Cairns Esplanade Lagoon



Kaplan International (Cairns) Pty Ltd.,  
ABN 83 010 846 821, CRICOS 00080F



130 Mcleod Street  
Cairns, QLD 4870

+61 (0)7 4031 3466

[www.kaplan.to/cairns](http://www.kaplan.to/cairns)

See what we're up to on  
Facebook:  
[facebook.com/kic Cairns](https://facebook.com/kic Cairns)

## SCHOOL

- School size
- WiFi
- K+ curriculum
- Interactive whiteboards
- Library
- Student lounge
- Multimedia lab
- Cafeteria
- Garden/outdoor area
- Test center:  
Cambridge and IELTS

## ACCOMMODATION

- Homestay
- Residence



# WHERE CAN YOUR ENGLISH TAKE YOU?

Have you ever dreamed of studying in an English-speaking university, working abroad, or having a successful international career? Find out what our previous students are doing and where English could take you.



*Brazil*

## **RAFAEL PACHECO**

"After my Kaplan Experience I moved straight to London, I backpacked around Europe for 3 months and later started working at Jaguar Land Rover as Project Development Engineer. Kaplan gave me confidence; it's an unforgettable experience – it will help your CV, to understand different cultures, and to open your mind to new experiences."



*South Korea*

## **MYEONGCHEOL KIM**

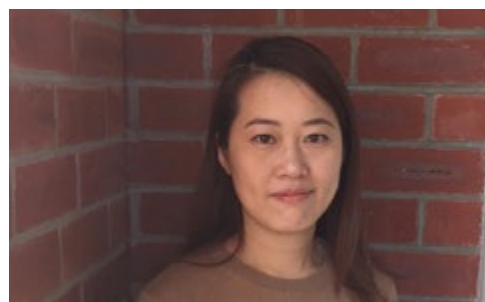
"I was working at a trading company that makes clothes for Macy's. I used my English skills at work for emails and calls. The world is smaller than you think if you can speak English. Kaplan can help you."



*France*

## **REMY BARBIER**

"I originally decided to study English for personal growth, to travel, and to meet people from around the world. After studying in Australia, I decided I wanted to live and work here. I have a nursing license from my home country and my IELTS qualification will allow me to work in Australia as a nurse."



*China*

## **ALICE SUN**

"My studies at Kaplan have allowed me to advance my knowledge and to enrich my life. Thanks to Kaplan I'm now studying a Professional Masters in Marketing at Auckland University of Technology."

## PRICES & START DATES 2017

The prices found in this brochure are in the local currency of each destination. For further information about our excellent range of destinations and study programs outside of Australia and New Zealand please see the Kaplan International 2017 worldwide brochure or visit [www.kaplaninternational.com](http://www.kaplaninternational.com).

Prices are correct at the time of printing (September 2016) and are valid for courses starting in 2017. Kaplan has the right to change prices due to tax increases, governmental actions, or other events beyond Kaplan's control. Exam fees are not included in exam course prices but are available on request. Details of what course fees include, plus further supplements/deposits (courier, change, materials, housing, etc.) are listed in the Terms and Conditions on page 54–55 and also at [www.kaplan.to/terms-conditions](http://www.kaplan.to/terms-conditions).

# AUCKLAND

COURSES FLEXIBLE LENGTH	PRICE PER WEEK (NZD)			START DATES
	2-12 WKS	13-23 WKS	24+ WKS	
Vacation English	360	-	-	Every Monday (or Tuesday if Monday is a public holiday)
General English	385	375	365	
Intensive English Intensive Business English	450	435	420	
IELTS Preparation (Intensive)	450	435	420	

COURSES SET LENGTH	WEEKS	PRICE PER COURSE (NZD)	START DATES
English Plus Rugby	On request		
English for Academic Purposes	10	4,500	Mar 27; Sep 25
Cambridge Exam Preparation (FCE, CAE)	8	3,600	Jan 16; Apr 10; Jul 3; Oct 2
	10	4,500	Jan 4; Mar 27; Jun 19; Sep 18
	12	5,400	Mar 13; Sep 4
Intensive Academic Year	32	11,970	Jan 4; Feb 13; Apr 3; Jun 12; Jul 24; Aug 28; Sep 18, 25
Intensive Academic Semester (6 months)	24	9,240	Jan 4; Feb 13; Mar 13; Apr 3; May 15; Jun 12; Jul 24; Aug 28; Sep 18, 25; Oct 9
Intensive Academic Semester (5 months)	20	7,830	
OPUS English 8	32	11,970	Every Monday (or Tuesday if Monday is a public holiday)
OPUS English 6	24	9,240	
OPUS English 5	20	7,830	
OPUS Working Holiday	12	5,400	

ACCOMMODATION OPTIONS	PRICE PER WEEK (NZD)		PRICE EXTRA NIGHT (NZD)	
	SINGLE	TWIN	SINGLE	TWIN / DOUBLE
Homestay (16 meals/week) Min. age 18	290	-	50	-
Homestay under 18 (16 meals/week) Min. age 16	320	-	55	-
Homestay Premium (16 meals/week) Min. age 16	360	-	60	-
St Martin's Apartment (No meals) Min. age 18	590	-	85	-
City Lodge (No meals) Min. age 18	350	-	55	-
City Lodge Premium (No meals) Min. age 18	400	-	60	-
YMCA Hostel (No meals) Min. age 18	310	500 per room	50	75 per room

SUPPLEMENTS	PRICE (NZD)
Enrollment Fee	250
Travel and Medical Insurance	24 (per week)
One-to-One Tuition	145 (per lesson)
Internship	1,900
University Placement Service	500 (free with 16+ week course)
Course Materials Fee	12 (per week) (max 300)
K +tools and K +eXtra Extension	40 (3 months)
	80 (6 months)
	120 (9 months)
Cambridge Exam Fee	350
Accommodation Placement Fee	250
Homestay Holiday Retainer Fee	150 (per week)
Homestay Christmas Supplement (Dec 24-31)	105
Homestay Special Diet	50 (per week)
Transfer Service Auckland Airport	120 (one way)

As a guide, cost of living is approximately NZD150-180 per week for living costs (e.g. food, transport, entertainment, etc). Course related costs are approximately NZD10-15 per week for stationery. Exam fees (Cambridge and IELTS) vary between NZD340-385.

For more information: [kaplaninternational.com](https://www.kaplaninternational.com)

# MELBOURNE

CRICOS provider code: 03008A

COURSES FLEXIBLE LENGTH	PRICE PER WEEK (AUD)			START DATES
	2-12 WKS	13-23 WKS	24+ WKS	
Vacation English* (maximum 17 weeks)	335	315	-	Every Monday (or Tuesday if Monday is a public holiday)
Intensive English	425	415	405	
IELTS Preparation (Intensive)	425	415	405	
Intensive English Evening	320	310	300	
English for Business*	425	415	-	

COURSES SET LENGTH	WEEKS	PRICE PER COURSE (AUD)	START DATES
English for Academic Purposes	10	4,250	Jan 3; Apr 18; Jul 10; Oct 9
Cambridge Exam Preparation (FCE, CAE)	8	3,400	Jan 16; Apr 10; Jul 3; Oct 2
	10	4,250	Jan 3; Mar 27; Jun 19; Sep 18
	12	5,100	Mar 14; Sep 4
Intensive Academic Year	32	10,935	Jan 3; Feb 13; Apr 3; Jun 13; Jul 24; Aug 28; Sep 18, 25
Intensive Academic Semester (6 months)	24	8,910	Jan 3; Feb 13; Mar 14; Apr 3; May 15; Jun 13; Jul 24; Aug 28; Sep 18, 25; Oct 9
Intensive Academic Semester (5 months)	20	7,470	

\* Not suitable for student visa holders

ACCOMMODATION OPTIONS	PRICE PER WEEK (AUD)		PRICE EXTRA NIGHT (AUD)	
	SINGLE	TWIN	SINGLE	TWIN
Homestay (14 meals/week) Min. age 18	305	-	55	-
Homestay under 18 (16 meals/week) Min. age 16	335	-	60	-
CozyStay Sharehouse (No meals) Min. age 18, Min 4-week booking	385	280	On request	
Hostel Unilodge (No meals) Age range 18 - 25 only	325	-	55	-

SUPPLEMENTS	PRICE (AUD)
Enrollment Fee	250
Travel and Medical Insurance	32 (per week)
Overseas Student Health Cover* (mandatory for student visa)	56 (per month)
One-to-One Tuition	145 (per lesson)
University Placement Service	450 (free with 16+ week course)
Course Materials Fee	12 (per week) (max 300)
K +tools and K +eXtra Extension	40 (3 months)
	80 (6 months)
	120 (9 months)
Cambridge Exam Fee	330
Accommodation Placement Fee	250
Homestay Holiday Retainer Fee	160 (per week)
Homestay Christmas Supplement (Dec 24-31)	105
Homestay Special Diet	50 (per week)
Transfer Service Tullamarine Airport	165 (one way)
Transfer Service Avalon Airport	240 (one way)

\* Family/dual cover quotation available upon request



COURSES FLEXIBLE LENGTH	PRICE PER WEEK (AUD)			START DATES
	2-12 WKS	13-23 WKS	24+ WKS	
Vacation English* (maximum 17 weeks)	360	340	-	Every Monday (or Tuesday if Monday is a public holiday)
Intensive English	435	425	415	
IELTS Preparation (Intensive)	435	425	415	
Intensive English Evening IELTS Preparation Evening	335	325	315	

COURSES SET LENGTH	WEEKS	PRICE PER COURSE (AUD)	START DATES
English Plus Surfing*	On request		
Cambridge Exam Preparation (FCE, CAE)	8	3,480	Jan 16; Apr 10; Oct 3
	10	4,350	Jan 3; Mar 27; Sep 18
	12	5,220	Mar 13; Sep 4
Intensive Academic Year	32	11,205	Jan 3; Feb 13; Apr 3; Jun 13; Jul 24; Aug 28; Sep 18, 25
Intensive Academic Semester (6 months)	24	9,490	Jan 3; Feb 13; Mar 13; Apr 3; May 15; Jun 13; Jul 24; Aug 28; Sep 18, 25; Oct 9
Intensive Academic Semester (5 months)	20	7,990	

\* Not suitable for student visa holders

ACCOMMODATION OPTIONS	PRICE PER WEEK (AUD)			PRICE EXTRA NIGHT (AUD)		
	SINGLE	TWIN	MULTI	SINGLE	TWIN	MULTI
Homestay (16 meals/week) Min. age 18	305	-	-	55	-	-
Homestay under 18 (16 meals/week) Min. age 16	335	-	-	60	-	-
YHA Sydney Beachouse Hostel (No meals) Min. age 18 Peak rates apply from 15/12 until 15/01	-	340	265	-	55	50
Hostel Bunkhouse (No meals) Min. age 18	-	350	270	-	55	50

SUPPLEMENTS	PRICE (AUD)
Enrollment Fee	250
Travel and Medical Insurance	32 (per week)
Overseas Student Health Cover* (mandatory for student visa)	56 (per month)
One-to-One Tuition	145 (per lesson)
University Placement Service	450 (free with 16+ week course)
Course Materials Fee	12 (per week) (max 300)
<i>K+tools</i> and <i>K+eXtra</i> Extension	40 (3 months)
	80 (6 months)
	120 (9 months)
Cambridge Exam Fee	330
Accommodation Placement Fee	250
Homestay Holiday Retainer Fee	160 (per week)
Homestay Christmas Supplement (Dec 24-31)	105
Homestay Special Diet	50 (per week)
Transfer Service Sydney Airport	165 (one way)

\* Family/dual cover quotation available upon request

COURSES FLEXIBLE LENGTH	PRICE PER WEEK (AUD)			START DATES
	2-12 WKS	13-23 WKS	24+ WKS	
Vacation English* (maximum 17 weeks)	360	340	-	Every Monday (or Tuesday if Monday is a public holiday)
Intensive English Intensive Business English	435	425	415	
IELTS Preparation (Intensive)	435	425	415	
Intensive English Evening IELTS Preparation Evening	335	325	315	

COURSES SET LENGTH	WEEKS	PRICE PER COURSE (AUD)	START DATES
English for Academic Purposes	10	4,350	Jan 3; Apr 18; Jul 10; Oct 9
Cambridge Exam Preparation (FCE, CAE)	8	3,480	Jan 16; Apr 10; Jul 3; Oct 3
	10	4,350	Jan 3; Mar 27; Jun 19; Sep 18
	12	5,220	Mar 13; Sep 4
Intensive Academic Year	32	11,205	Jan 3; Feb 13; Apr 3; Jun 13; Jul 24; Aug 28; Sep 18, 25
Intensive Academic Semester (6 months)	24	9,490	Jan 3; Feb 13; Mar 13; Apr 3; May 15; Jun 13; Jul 24; Aug 28; Sep 18, 25; Oct 9
Intensive Academic Semester (5 months)	20	7,990	

\* Not suitable for student visa holders

ACCOMMODATION OPTIONS	PRICE PER WEEK (AUD)		PRICE EXTRA NIGHT (AUD)	
	SINGLE	TWIN	SINGLE	TWIN
Homestay (14 meals/week) Min. age 18	305	-	55	-
Homestay under 18 (16 meals/week) Min. age 16	335	-	60	-
Homestay Premium (16 meals/week) Min. age 16	375	-	60	-
Hostel City (No meals) Min. age 18	370	270	60	50
Guesthouse Jack's Place (No meals) Min. age 18	370	-	60	-
Guesthouse Forest Lodge (No meals) Min. age 18	-	280	-	50
Hostel Beach (7 meals/week) Min. age 18 Min. 4-week booking	400	300	60	50

SUPPLEMENTS	PRICE (AUD)
Enrollment Fee	250
Travel and Medical Insurance	32 (per week)
Overseas Student Health Cover* (mandatory for student visa)	56 (per month)
One-to-One Tuition	145 (per lesson)
University Placement Service	450 (free with 16+ week course)
Course Materials Fee	12 (per week) (max 300)
<i>K+tools</i> and <i>K+eXtra</i> Extension	40 (3 months)
	80 (6 months)
	120 (9 months)
Cambridge Exam Fee	330
Accommodation Placement Fee	250
Homestay Holiday Retainer Fee	160 (per week)
Homestay Christmas Supplement (Dec 24-31)	105
Homestay Special Diet	50 (per week)
Transfer Service Sydney Airport	165 (one way)

\* Family/dual cover quotation available upon request

# PERTH

CRICOS provider code: 01784K

COURSES FLEXIBLE LENGTH	PRICE PER WEEK (AUD)			START DATES
	2-12 WKS	13-23 WKS	24+ WKS	
Vacation English* (maximum 17 weeks)	335	315	-	Every Monday (or Tuesday if Monday is a public holiday)
Intensive English	425	415	405	
IELTS Preparation (Intensive)	425	415	405	
Intensive English Evening IELTS Preparation Evening	320	310	300	
English for Business*	425	415	-	

COURSES SET LENGTH	WEEKS	PRICE PER COURSE (AUD)	START DATES
English for Academic Purposes	10	4,250	Apr 18; Oct 9
Cambridge Exam Preparation (FCE, CAE)	8	3,400	Jan 16; Apr 10; Jul 3; Oct 3
	10	4,250	Jan 3; Mar 27; Jun 19; Sep 18
	12	5,100	Mar 13; Sep 4
Intensive Academic Year	32	10,935	Jan 3; Feb 13; Apr 3; Jun 12; Jul 24; Aug 28; Sep 18, 25
Intensive Academic Semester (6 months)	24	8,910	Jan 3; Feb 13; Mar 13; Apr 3; May 15; Jun 12; Jul 24; Aug 28; Sep 18, 25; Oct 9
Intensive Academic Semester (5 months)	20	7,470	

\* Not suitable for student visa holders

ACCOMMODATION OPTIONS	PRICE PER WEEK (AUD)		PRICE EXTRA NIGHT (AUD)	
	SINGLE	TWIN	SINGLE	TWIN
Homestay (14 meals/week) Min. age 18	280	-	50	-
Homestay under 18 (16 meals/week) Min. age 16	310	-	55	-
Demi Pair Accommodation (4 weeks required) Min. age 18	280	-	50	-
CozyStay Sharehouse (No meals) Min age 18, Min 4-week booking	300	250	On request	
Townsend Lodge	345	-	70	-

SUPPLEMENTS	PRICE (AUD)
Enrollment Fee	250
Travel and Medical Insurance	32 (per week)
Overseas Student Health Cover * (mandatory for student visa)	56 (per month)
One-to-One Tuition	145 (per lesson)
University Placement Service	450 (free with 16+ week course)
Course Materials Fee	12 (per week) (max 300)
<i>K +tools</i> and <i>K +eXtra</i> Extension	40 (3 months)
	80 (6 months)
	120 (9 months)
Cambridge Exam Fee	330
Accommodation Placement Fee	250
Demi Pair Placement Fee	600
Homestay Holiday Retainer Fee	150 (per week)
Homestay Christmas Supplement (Dec 24-31)	105
Homestay Special Diet	50 (per week)
Transfer Service Perth Airport	135 (one way)

\* Family/dual cover quotation available upon request

# ADELAIDE

CRICOS provider code: 03008A

COURSES FLEXIBLE LENGTH	PRICE PER WEEK (AUD)			START DATES
	2-12 WKS	13-23 WKS	24+ WKS	
Vacation English* (maximum 17 weeks)	315	305	-	Every Monday (or Tuesday if Monday is a public holiday)
Intensive English	400	385	370	
IELTS Preparation (Intensive)	400	385	370	

COURSES SET LENGTH	WEEKS	PRICE PER COURSE (AUD)	START DATES
English for Academic Purposes	10	4,000	Apr 18; Oct 9
Cambridge Exam Preparation (FCE, CAE)	8	3,200	Jan 16; Jul 3
	10	4,000	Jan 3; Jun 19
Intensive Academic Year	32	9,990	Jan 3; Feb 13; Apr 3; Jun 13; Jul 24; Aug 28; Sep 18, 25
Intensive Academic Semester (6 months)	24	8,190	Jan 3; Feb 13; Mar 14; Apr 3; May 15; Jun 13; Jul 24; Aug 28; Sep 18, 25; Oct 9
Intensive Academic Semester (5 months)	20	6,930	

\* Not suitable for student visa holders

ACCOMMODATION OPTIONS	PRICE PER WEEK (AUD)		PRICE EXTRA NIGHT (AUD)	
	SINGLE	DOUBLE	SINGLE	DOUBLE
Homestay (14 meals/week) Min. age 18	280	-	50	-
Homestay under 18 (16 meals/week) Min. age 16	310	-	55	-
Brighton Beach Student Lodge (No meals) Min. age 18	190	205 (per room)	30	70* (per room)

\*Double room prices quoted are for one person. Couples can book together at an additional charge.

SUPPLEMENTS	PRICE (AUD)
Enrollment Fee	250
Travel and Medical Insurance	32 (per week)
Overseas Student Health Cover * (mandatory for student visa)	56 (per month)
One-to-One Tuition	145 (per lesson)
University Placement Service	450 (free with 16+ week course)
Course Materials Fee	12 (per week) (max 300)
<i>K +tools</i> and <i>K +eXtra</i> Extension	40 (3 months)
	80 (6 months)
	120 (9 months)
Cambridge Exam Fee	330
Accommodation Placement Fee	250
Homestay Holiday Retainer Fee	150 (per week)
Homestay Christmas Supplement (Dec 24-31)	105
Homestay Special Diet	50 (per week)
Transfer Service Adelaide Airport	145 (one way)

\* Family/dual cover quotation available upon request



BRISBANE

CRICOS provider code: 02369F

COURSES FLEXIBLE LENGTH	PRICE PER WEEK (AUD)			START DATES
	2-12 WKS	13-23 WKS	24+ WKS	
Vacation English* (maximum 17 weeks)	315	305	-	Every Monday (or Tuesday if Monday is a public holiday)
Intensive English	400	385	370	
IELTS Preparation (Intensive)	400	385	370	

COURSES SET LENGTH	WEEKS	PRICE PER COURSE (AUD)	START DATES
English for Academic Purposes	10	4,000	Oct 9
Cambridge Exam Preparation (FCE, CAE)	8	3,200	Jan 16; Apr 10; Jul 3; Oct 3
	10	4,000	Jan 3; Mar 27; Jun 19; Sep 18
	12	4,800	Mar 13; Sep 4
Intensive Academic Year	32	9,990	Jan 3; Feb 13; Apr 3; Jun 12; Jul 24; Aug 28; Sep 18, 25
Intensive Academic Semester (6 months)	24	8,190	Jan 3; Feb 13; Mar 13; Apr 3; May 15; Jun 12; Jul 24; Aug 28; Sep 18, 25; Oct 9
Intensive Academic Semester (5 months)	20	6,930	

\* Not suitable for student visa holders

ACCOMMODATION OPTIONS	PRICE PER WEEK (AUD)		PRICE EXTRA NIGHT (AUD)	
	SINGLE	TWIN	SINGLE	TWIN
Homestay (16 meals/week) Min. age 18	280	-	50	-
Homestay under 18 (16 meals/week) Min. age 16	310	-	55	-
CozyStay Sharehouse (No meals) Min age 18, Min 4-week booking	320	250	On request	
Apartment Unilodge (No meals) Min. age 18	410	-	70	-
Adalong Guesthouse (12 meals/week) Min. age 18 Min. 4-week booking	310	-	65	-

SUPPLEMENTS	PRICE (AUD)
Enrollment Fee	250
Travel and Medical Insurance	32 (per week)
Overseas Student Health Cover* (mandatory for student visa)	56 (per month)
One-to-One Tuition	145 (per lesson)
University Placement Service	450 (free with 16+ week course)
Course Materials Fee	12 (per week) (max 300)
<i>K+tools</i> and <i>K+eXtra</i> Extension	40 (3 months)
	80 (6 months)
	120 (9 months)
Cambridge Exam Fee	330
Accommodation Placement Fee	250
Homestay Holiday Retainer Fee	150 (per week)
Homestay Christmas Supplement (Dec 24-31)	105
Homestay Special Diet	50 (per week)
Transfer Service Brisbane Airport	150 (one way)
Transfer Service Gold Coast Airport	245 (one way)

\* Family/dual cover quotation available upon request

CAIRNS

CRICOS provider code: 00080F

COURSES FLEXIBLE LENGTH	PRICE PER WEEK (AUD)			START DATES
	2-12 WKS	13-23 WKS	24+ WKS	
Vacation English* (maximum 17 weeks)	290	275	-	Every Monday (or Tuesday if Monday is a public holiday)
Intensive English	360	345	330	
IELTS Preparation (Intensive)	360	345	330	

COURSES SET LENGTH	WEEKS	PRICE PER COURSE (AUD)	START DATES
English Plus Diving* (Accommodation not included)	2	1,500	Every Monday (or Tuesday if Monday is a public holiday)
English for Young Learners* (Accommodation included)	1	1,320	Jul 30; Aug 6
	2	2,020	Jul 30
English for Academic Purposes	10	3,600	Oct 9
Cambridge Exam Preparation (FCE, CAE)	8	2,880	Apr 10; Jul 3; Oct 3
	10	3,600	Mar 27; Jun 19; Sep 18
	12	4,320	Mar 13; Sep 4
Intensive Academic Year	32	8,910	Jan 3; Feb 13; Apr 3; Jun 12; Jul 24; Aug 28; Sep 18, 25
Intensive Academic Semester (6 months)	24	7,260	Jan 3; Feb 13; Mar 13; Apr 3; May 15; Jun 12; Jul 24; Aug 28; Sep 18, 25; Oct 9
Intensive Academic Semester (5 months)	20	6,190	

\* Not suitable for student visa holders

ACCOMMODATION OPTIONS	PRICE PER WEEK (AUD)		PRICE EXTRA NIGHT (AUD)	
	SINGLE	TWIN	SINGLE	TWIN
Homestay (16 meals/week) Min. age 18	260	-	45	-
Homestay under 18 (16 meals/week) Min. age 16	290	-	50	-
Cairns Sharehouse (No meals) Min. age 18 Min. 4-week booking	260	On request	50	On request

SUPPLEMENTS	PRICE (AUD)
Enrollment Fee	250
Travel and Medical Insurance	32 (per week)
Overseas Student Health Cover* (mandatory for student visa)	56 (per month)
One-to-One Tuition	145 (per lesson)
University Placement Service	450 (free with 16+ week course)
Course Materials Fee	12 (per week) (max 300)
<i>K+tools</i> and <i>K+eXtra</i> Extension	40 (3 months)
	80 (6 months)
	120 (9 months)
Cambridge Exam Fee	330
Accommodation Placement Fee	250
Homestay Holiday Retainer Fee	150 (per week)
Homestay Christmas Supplement (Dec 24-31)	105
Homestay Special Diet	50 (per week)
Return Transfer Service Cairns Airport (mandatory for all homestay accommodation bookings, but not bookable for hostel bookings)	40

\* Family/dual cover quotation available upon request

# ENROLLMENT FORM

## STUDENT INFORMATION

Family Name	
First Name(s)	<input type="checkbox"/> Male <input type="checkbox"/> Female
Date of Birth (dd/mm/yyyy)	
Country of Birth	
Nationality	
Mother Tongue	
Full Address	
City	Postcode
Country	
E-mail	
Telephone	
Language Level	
Type of Visa	Passport Number
Name and Surname of legal guardian if student is under 18 years of age*	
Home telephone number of legal guardian if student is under 18 years of age*	
Permanent address of legal guardian if student is under 18 years of age*	

## SCHOOL AND COURSE INFORMATION

1. School Name and Location	
Course Name*	
Number of Weeks	Start Date
2. School Name and Location	
Course Name*	
Number of Weeks	Start Date

\*Please check the relevant school page and make sure your chosen course is offered at school you have selected.

## ACCOMMODATION

Room type <input type="checkbox"/> Single room <input type="checkbox"/> Twin room <input type="checkbox"/> Twin/Multi room	Accommodation type <input type="checkbox"/> Homestay <input type="checkbox"/> Apartment <input type="checkbox"/> Residence <input type="checkbox"/> Hotel	Check-in date (dd/mm/yyyy)
Accommodation name		Check-out date (dd/mm/yyyy)
Meals per week (if different options are advertised)		
Do you have any special requests (e.g. medical requirements, allergies, special diet, no cats/dogs)? <input type="checkbox"/> Yes <input type="checkbox"/> No If yes, please specify:		
Do you smoke? <input type="checkbox"/> Yes <input type="checkbox"/> No	Premium homestay supplement <input type="checkbox"/> Sydney* <input type="checkbox"/> Auckland*	
Accommodation Option 2 (if first choice is not available)		

Other accommodation supplements may apply, including seasonal supplements during the summer or at Christmas. See price list or speak to a Kaplan representative for details.

\* Subject to availability. Please check before booking.

## KAPLAN REPRESENTATIVE INFORMATION

Partner Name/Contact Person	
Country	
E-mail	
Telephone	Fax
For all partner bookings, please confirm who will be responsible for the total payment of this booking by selecting an option below <input type="checkbox"/> Partner <input type="checkbox"/> Partner and Student (please give details including amounts): <input type="checkbox"/> Student	
Partner Signature	

## MEDICAL CONDITIONS

Do you have a disability, impairment or long-term medical condition which may affect your studies? ☐ Yes ☐ No

If yes, please provide medical documentation from a relevant treating professional detailing the impact of your condition on your ability to meet academic demands. Please see our Terms and Conditions/Application Process/Health Declaration on page 54–55.

## ADDITIONAL SERVICES

Would you like Kaplan Travel and Medical Insurance? ☐ Yes ☐ No  
(If not, you will need to organise your own medical insurance)

If you are travelling to Australia, would you like Overseas Student Health Cover?  
☐ Yes ☐ No (Mandatory for student visa)

If yes, please indicate: ☐ Single ☐ Couple ☐ Family

Would you like an airport transfer

On arrival? ☐ Yes ☐ No On departure? ☐ Yes ☐ No  
(Please send flight details to your Kaplan representative)

I would also like to book the following services

- ☐ Internship Placement  
☐ University Placement Service  
☐ Courier service for visa documentation

## PAYMENT

At this time, I wish to pay: ☐ The enrollment fee ☐ The full fees

- ☐ I wish to pay by credit card (please contact Kaplan International to arrange payment or visit [www.kaplaninternational.com](http://www.kaplaninternational.com) to pay online)
- ☐ I enclose a cheque for the amount of \_\_\_\_\_ payable to registered business name. See details below
- ☐ I would like to arrange a bank transfer. Please send me transfer details.

I am sponsored by:

## DECLARATION

- ☐ I confirm that I have read, understood, and agree to be bound by Kaplan's Terms and Conditions detailed on pages 54-55 and Kaplan's privacy policy which can be found at [www.kaplaninternational.com/privacy](http://www.kaplaninternational.com/privacy).
- ☐ I authorise any licensed hospital or physician to initiate medical treatment for myself in case of medical emergency or for my child if he/she is under 18 years of age.

Signature	Date
Signature of parent/guardian (required if student is under 18 years old)*	Date



# TERMS & CONDITIONS VALID JANUARY 1 - DECEMBER 31 2017

## APPLICATION PROCESS

### 1. APPLICATION:

Please send the signed enrollment form to your Kaplan representative with the enrollment fee and, if applicable, the courier fee. Students 18 and over (19 and over for students attending our Vancouver location) must sign the enrollment form to say that they have read and agree with these terms and conditions. The parents or legal guardian of students under 18 (under 19 for students attending our Vancouver location) must read and also sign the enrollment form on their behalf.

### - Contract Formation:

By signing the enrollment agreement and returning the enrollment form the student is agreeing to enter into a binding contract with Kaplan. On Kaplan receiving the completed and signed enrollment form and enrollment fee, if the student's course and accommodation are available, Kaplan will produce a booking confirmation. Once this booking confirmation has been issued, a legally binding contract will be formed between the student and Kaplan, which is dependent on the student meeting all immigration requirements.

Your privacy is important to us. Please note that by submitting your personal data to us, you are accepting the terms described in our privacy policy, which can be found at: [www.kaplaninternational.com/privacy](http://www.kaplaninternational.com/privacy)

### 2. PAYMENT DEADLINE:

All course fees must be paid in full (unless otherwise notified) no later than 30 days before the course starts. If a booking is made less than 30 days before the course starts, the fees are immediately payable. If payment in full has not been received, you will not be allowed to start your course.

### - Australia:

For individual courses longer than 25 weeks, you will be invoiced for the full fees, but you have the option of a payment plan whereby 50% of tuition fees and 100% of all other fees must be paid in full no later than 30 days before the course starts, with the remainder of the tuition fees required two weeks before the start of the second study period of any individual course. This payment plan is not available for course packages of longer than 25 weeks if each individual course that comprises the package is 25 weeks or fewer.

### 3. VISA INFORMATION:

Visa requirements are subject to change, and it is the responsibility of the student to arrange all applicable travel permits or visas and to have a valid passport and leave to remain for the whole period of study. The student may be asked to make payment in full prior to the issuing of any of the visa documentation referred to below:

### - Australia:

Visa application forms (Confirmation of Enrollment) may not be issued by the school until full payment has been received and the enrollment agreement has been signed and returned. The enrollment agreement includes reference to the pre-departure and grievance procedures information and can be found on our website: [www.kaplaninternational.com](http://www.kaplaninternational.com)

### - New Zealand:

In accordance with government regulations, visa support (Fees Receipt) is only issued by Kaplan when full payment has been received. Full details of visa and permit requirements, advice on rights to employment in New Zealand while studying, and reporting requirements are available through the New Zealand Immigration Service and can be viewed on their website at: [www.immigration.govt.nz](http://www.immigration.govt.nz)

### 4. COURIER FEES:

If you enrol more than 30 days before the course start date, documentation will be sent by normal postal service, unless you request and pay for the courier service. In all countries, a courier service is available on request at AUD75, NZD85.

### 5. TRAVEL AND MEDICAL INSURANCE:

Travel and medical insurance is mandatory in most Kaplan school destinations for the duration of your stay regardless of your course length or course/visa type. Kaplan has worked in partnership with a number of partners to create a tailored travel and medical insurance plan. Details of what this covers are available from your Kaplan representative. You are responsible for the belongings which you bring with you to Kaplan schools or accommodation and for taking out insurance for your own possessions. You are required to show proof of medical insurance at the school when you arrive. You will not be allowed to commence a course until you have obtained satisfactory medical insurance.

### - Australia:

Australia: The Australian government requires all students on Student Visas to obtain Overseas Student Health Cover (OSHC), a compulsory health insurance plan for overseas students in Australia. This must be obtained before you apply for a Student Visa, and you can either obtain this independently or through Kaplan at a cost of AUD 56/month. OSHC must cover the whole duration of your Student Visa, and must start at least one week before the start date of your course. Additional fees will be charged if you arrive in Australia earlier, in order to cover insurance for the full visa period.

### - New Zealand:

Most international students are not entitled to publicly funded health services while in New Zealand. If you receive medical treatment during your visit, you may be liable for the full costs of that treatment. Full details on entitlements to publicly funded health services are available through the Ministry of Health and can be viewed on their website at [www.moh.govt.nz](http://www.moh.govt.nz). In addition, The Accident Compensation Corporation provides accident insurance for all New Zealand citizens, residents and temporary visitors to New Zealand, but you may still be liable for all other medical and related costs. Further information can be viewed on the ACC website at [www.acc.co.nz](http://www.acc.co.nz). Please note that Kaplan's recommended travel and medical insurance must be booked for a minimum of 4 weeks.

### 6. HEALTH DECLARATION:

Students must report on their enrollment form any mental or physical illness, allergy, disability or condition that may interfere with their ability to successfully complete their program, that may impact the health and well-being of any other student, host or staff member, that may require monitoring, treatment or emergency intervention of any kind during the student's anticipated period of enrollment, or that may require special accommodation. Kaplan reserves the right to reject an applicant or terminate a student's enrollment in the program if the student's continued participation represents a risk to their health and safety or to the health and safety of other students or staff, or if, notwithstanding reasonable accommodations, in the opinion of Kaplan, the student's physical or mental condition makes the student unable or unlikely to successfully complete their program. Refunds in such circumstances are at the discretion of Kaplan.

### 7. TUITION FEES:

Tuition fees include lessons, orientation meeting, use of computer room and internet, placement and progress testing and a Kaplan certificate on completion of the course. Kaplan reserves the right to withhold the granting of a certificate attained by a student if tuition fees or any other fees remain outstanding, or other conditions are not met.

### 8. ADDITIONAL SERVICES:

Any additional services (transfers, travel, laundry, telephone costs, excursions, medical costs, special diet, exam fees, change of accommodation and enrollment amendments) are not included in any fees unless specifically stated on a valid invoice.

### 9. TWIN ACCOMMODATION:

At Kaplan's discretion, students may be required to book single room accommodation instead of twin room accommodation.

### 10. UNDER 18 YEAR OLDS:

Kaplan delivers adult courses (except for programs advertised as being for juniors, teens or young learners). Therefore, students aged 16 and 17 are advised that they will be attending classes with students aged 18 and over. Under 18 year olds may be required to pay a guardian fee, provide custodianship documents, live in Kaplan-approved accommodation, book Kaplan's airport transfer service (these are compulsory in Australia and New Zealand) and purchase a medical insurance policy. All students under 18 must provide a signed Minor Authorisation form prior to arrival.

## TERMS & CONDITIONS

### 1. RULES AND REGULATIONS:

Students' arrangements with Kaplan are governed by the law of the country where the particular school attended is located.

### 2. ARRIVALS AND DEPARTURES:

All accommodation is booked from the Saturday or Sunday before the course start date until the Saturday morning after the course end date, unless otherwise advised. A partial week may be counted as 1 week's accommodation. Students arriving between 22:30 – 06:00 may be asked to book alternative accommodation in a hotel on their first night due to late/early arrival at accommodation, or be charged an extra night of accommodation.

### 3. LATE ARRIVALS, VACATIONS AND ABSENCES:

If you begin your enrollment late or are absent during your course, no refund will be made for the time missed. Periods of absence cannot be made up with a free extension of the course. Session Break dates are pre-built into the Academic Year and Academic Semester programs and students cannot make changes to these dates. Breaks taken at other times will be marked as periods of absence. For other courses, granting of any Session Breaks after the course has started will be at the discretion of individual schools, according to visa regulations, and may incur a change fee or be marked as a period of absence.

### 4. MEALS AND CLASSES MISSED:

No refunds or substitutions will be made for meals or classes missed due to exams, excursions, internships, first day orientation or other obligations that fall outside the normal schedule.

### 5. PUBLIC HOLIDAYS:

Classes are normally not held and most school facilities are closed on public holidays. All published course start dates fall on a Monday. If the Monday is a public holiday, the start date will fall on a Tuesday. Compensation will not be made for classes not offered on public holidays.

### 6. CAMPUS FACILITIES:

Students attending a Kaplan school at a university or college campus location are advised that campus facilities may not be available during campus holidays. Further details are available from the Kaplan booking office.

### 7. CHANGE FEES:

A minimum of 4 weeks' notice is required for any change. If you request a change of school location, course dates, accommodation or program type after your course has started, you will be charged a change fee of AUD75, NZD75, which is payable at the time the request is made. Kaplan is not obliged to fulfill any change request. Academic Year or Academic Semester students cannot transfer to a different Kaplan school during term time. If changing to a location where fees are lower, the difference in fees will not be refunded. If changing to a more expensive location or program, the difference in fees will be charged. All changes are subject to Kaplan's discretion and require approval of the School Principal / Director. You will not be charged a change fee if you extend your course. It is the responsibility of the student to pay for any course or accommodation extensions. Any change of tuition resulting in a reduction in lessons will be treated as a termination of the existing booking and rebooking, and will thus be subject to the standard terms & conditions governing terminations (see 'Termination Policy').

### 8. DURATION OF LESSONS:

All English lessons are 45 minutes in duration unless otherwise stated. Courses run from Monday to Friday and lessons are scheduled in the morning or the afternoon. Kaplan cannot guarantee a specific timetable.

### 9. SUBSTITUTION POLICY:

If, after the placement test taken on arrival at the school, a student is found to be at a level which is not appropriate for their booked course, the school reserves the right to place the student in an appropriate level class, which may have fewer lessons and a different curriculum. Students who do not have the ability to follow any course on offer may be required to terminate their studies with Kaplan. We also reserve the right to cancel courses at short notice due to insufficient demand.

### 10. PROGRAM CHANGES:

Kaplan has the right to change course dates, course curricula, tutors, locations and programs at any time at its discretion. However, in cases where the course is rescheduled prior to the start of the first course and the new date is unacceptable to the student, all fees will be refunded.

### 11. PRICES:

Kaplan has the right to change prices due to tax increases, governmental actions or other events beyond Kaplan's control. Prices are valid for courses starting in 2017.

### 12. BOOKS AND LEARNING MATERIALS:

All books and learning materials will be made available to students during their course. Some specialized courses may require the purchase of books. In New Zealand and Australia a materials fee is charged to students to cover the cost of such items.

### 13. RESIDENTIAL HOUSING DEPOSIT:

A refundable housing deposit of approximately NZD250-500 or AUD250-500 may be charged on arrival to students taking residential accommodation in New Zealand and Australia. Please note, deposit fees vary by school location; students will be informed at the time of booking should additional fees apply. The deposit is returned unless there is damage,

loss or extra cleaning to be paid for on the student's departure. In some cases the deposit may be non-refundable if the booking is cancelled. Additional fees may also apply in some locations (e.g. utilities, cleaning, and linen).

#### 14. EXPULSION/SUSPENSION:

Any student who commits a criminal offence, violates the student conduct code or school policy, has, in Kaplan's opinion, a poor attendance record (e.g. less than 80%, whether or not such attendance is in breach of any visa attendance requirements), or fails to pay an amount he or she is directly or indirectly liable to pay Kaplan in order to undertake the course, may be expelled or suspended. No refund will be given and the immigration authorities will be informed.

#### - Student Code of Conduct:

You agree to abide by the student conduct rules and other policies while attending Kaplan. As part of Kaplan's commitment to our students' success, we seek to provide an optimal learning environment and expect students to conduct themselves in a manner that is considerate of those around them. Inappropriate conduct includes but is not limited to: (1) disruptions to the learning environment (i.e. use of profanity, harassment, mobile phone use in classrooms, etc.); (2) deliberate destruction, misuse, or theft of Kaplan property or the property of fellow classmates; (3) violence or threats of violence towards persons or property of students or Kaplan staff; (4) improper use of email or Internet access; and (5) failure to comply with local copyright or criminal laws forbidding the misappropriation, copying or alteration of copyright-protected materials.

#### 15. LIABILITY:

The liability of Kaplan, its group companies, their directors, officers, employees, affiliates, agents and partners with respect to losses arising from negligence (except where such liability cannot be excluded as a matter of law), breach of contract or otherwise will be limited in all circumstances to the full amount paid to Kaplan or the relevant Kaplan group company by the relevant student for the particular program. Such companies and persons will in no circumstances have any liability for indirect or consequential losses or damages.

#### 16. FORCE MAJEURE:

Kaplan will not be liable in cases where Kaplan is unable to fulfil any services to which they are contractually bound because of fire, natural disaster, act of government, failure of suppliers or subcontractors, labour disputes or other reasons which are beyond Kaplan's control.

#### 17. CODES OF PRACTICE:

Kaplan has agreed to observe and be bound by the Code of Practice for the Pastoral Care of International Students published by the New Zealand Minister of Education and by the Australian National Code of Practice 2007 and the Educational Services for Overseas Students Act 2000 (ESOS Act 2000). Information on these Codes is available on request from Kaplan or from: [www.minedu.govt.nz](http://www.minedu.govt.nz) and [www.internationaleducation.gov.au](http://www.internationaleducation.gov.au)

#### 18. PHOTOGRAPHY, FILMING AND SOUND RECORDING:

Kaplan or its representatives may arrange to photograph or shoot video footage of students for promotional purposes, both printed and online. Any student who does not wish to participate should advise us at the time of booking and state at the time of the photographing or video shooting the wish not to participate. By accepting these terms and conditions the student (and their parent/ guardian if under 18 gives consent to the use of these photographs or video footage without further consent or notification.

#### 19. AUSTRALIA:

Legal Entities and CRICOS codes Australia: Kaplan International (Brisbane) Pty Limited, ABN 81 097 629 073, CRICOS 02369F; Kaplan International (Cairns) Pty Limited, ABN 83 010 846 821, CRICOS 00080F; Kaplan International (Melbourne & Adelaide) Pty Limited, ABN 90 129 017 385, CRICOS 03008A; Kaplan International (Perth) Pty Limited, ABN 76 079 200 212, CRICOS 01784K; Kaplan International English (Australia) Pty Limited, ABN 31 003 631 043, CRICOS 01165D; Kaplan International (Manly) Pty Limited, ABN 93 098 348 844, CRICOS 02362B.

Agreement to the Kaplan Terms and Conditions does not remove the student's right to take further action under Australia's consumer protection laws, or their right to pursue other legal remedies under Australian law. All additional information and documents can be found on the Kaplan website: [www.kaplaninternational.com](http://www.kaplaninternational.com)

#### 20. STUDENT VISA:

Student visa holders are required to provide Kaplan with a current residential address and telephone number at all times, maintain satisfactory academic progress and attend a minimum of 80% (in Australia/New Zealand) of their course.

Students who fail to show up for their enrollment or with less than 80% attendance (in Australia/New Zealand) will be reported to the Department of Immigration and Border Protection (DIBP) in Australia, to New Zealand Immigration Services. Regardless of immigration status, information collected by Kaplan which personally identifies a student and information regarding a student's course progress may be shared with the Australian State and Federal or the Tuition Protection Service (Australia), students' parents, Kaplan staff and third-party representatives (i.e. agents and/or government sponsors) and law enforcement officials. This information may include personal and contact details, course enrollment details and changes, and circumstances of any suspected breach by the student of any visa condition. Any school-aged dependents accompanying overseas students to Australia will be required to pay full fees if they are enrolled in either a government or non-government school.

#### 21. LANGUAGE OF INSTRUCTION:

All language of instruction shall be in English.

### REFUND POLICY

Refunds will be made via the Kaplan representative to whom the fees were originally paid, or to the student's bank account in the same country in which the fees were originally paid. All refunds will be made within 45 days of written notification. In the event of Kaplan cancelling or terminating a course, a full refund of all unused fees will be made.

#### - Australia:

Refunds will be paid within 14 working days of written notification. In accordance with the ESOS Act 2000, Kaplan will pay a full refund within 14 days if the course being offered does not commence on the agreed starting day; or the course stops being provided at any time after it starts and before it is completed; or the course is not provided in full to the student because a sanction has been imposed on the college. This agreement, and the availability of complaints and appeals process, does not remove the right of the student to take action under Australia's customer protection laws.

### POSTPONEMENT POLICY

Postponements will only be made on receipt of a valid written customer request. Bookings may be postponed a maximum of two times within one year of the original booking date. Bookings may only be postponed by up to 6 months at a time. You may be rebooked at the rates currently in effect at the time of rebooking. Only one tuition promotion may be used at any time; any previously expired promotions will no longer be valid at the time of postponement; a current promotion, valid at the time of postponement, may be applied.

### CANCELLATION POLICY

'Cancellation' means cancelling a course before the start date of the first course you are attending and for which attendance is required. Except as provided below for New Zealand, in all other cases where cancellations are made in writing 7 days or more before the arrival date listed on the booking confirmation form, or on written notification of a visa rejection and receipt of relevant supporting documentation, 100% of the tuition and accommodation fees will be refunded, but in all cases the courier fee, accommodation placement fee and enrollment fee (refundable in New Zealand only) and any other service charges, as applicable, are non-refundable. For cancellations and postponements made less than 7 days before the arrival date listed on the booking confirmation form including failure to show up, tuition and accommodation fees will be refunded less one week's accommodation fee (two weeks' accommodation fee for hostels and apartments in Australia) and a tuition fee of AUD240. In all cases, the courier fee, enrollment fee, accommodation placement fee, medical insurance and any other service charges are non-refundable. In all cases where a visa or visa support documentation has been issued, the relevant immigration authorities will be informed.

#### - New Zealand:

Tuition (in accordance with the NZQA and Kaplan refund policy):

- Courses of 13 weeks or longer: cancellations or terminations made prior to or within the first 10 working days of the course will be refunded in full, less a deduction for costs incurred by Kaplan, up to a maximum

of 25% of the total fee paid. Kaplan will provide you with details of the cost components for the purpose of working out the maximum deductible percentage. In the event of a dispute over the cost component deducted, you can refer the matter to the New Zealand Quality Authority (NZQA).

#### - Courses 2 to 12 weeks

- Courses of 5 weeks or more but less than 3 months: Where a student withdraws within the first 5 days of the course for which attendance is required (i.e. Orientation), Kaplan may retain up to 25% of the full amount of any payments made by the student in respect of the course, and will refund the balance to the student.

- Courses of up to and including 4 weeks and 6 days: Where a student withdraws within the first 2 days of the course for which attendance is required (i.e. Orientation), Kaplan may retain up to 50% of the full amount of any payments made by the student in respect of the course, and will refund the balance to the student.

Students who withdraw before the course commences will also be subject to the above criteria.

### TERMINATION POLICY

'Termination' means stopping or leaving all or part of the course or courses booked, including extensions, once the first course has started. When determining the number of weeks completed, a partial week will be counted as a whole week, provided the student was present at least one day during the scheduled week. Used weeks of discounted tuition and accommodation packages will be charged at the full brochure weekly rate when any refund is calculated.

In all cases additional service charges (e.g. airport transfers, courier fees, enrollment fees, medical insurance, accommodation placement fee, program supplement fee, etc.) are non-refundable and written notification of termination must be given to the School Principal/Director. Students who terminate their program may not be eligible to receive a Kaplan certificate and will not be allowed to stay in Kaplan accommodation.

#### TUITION:

#### - Australia:

No refunds will be made for tuition. Tuition fees are non-transferable to other students.

#### - New Zealand:

The same conditions apply on termination as to cancellations. See cancellation policy above.

In all cases where a student terminates his or her studies the relevant immigration authorities will be informed.

#### ACCOMMODATION:

Students must give 2 weeks' notice in Australia and New Zealand in writing to the School Principal/Director. A refund will be made of the unused accommodation fee less the applicable notice period and the applicable change fee. Used weeks of discounted accommodation packages will be charged at the full brochure weekly rate when any refund is calculated. Some residential options may have additional terms and conditions relating to reservation cancellation.

### GENERAL

These Terms and Conditions may differ according to any changes in the policy made by the accrediting body or government (local or national) where the school is located. You will be notified at the time of booking of any such amendments. Any dispute, claim or other matter arising will be subject to the current laws in the destination country. In these Terms and Conditions, Kaplan refers to all Kaplan International English group schools.

If you progress to study at one of our Pathway Partners separate terms and conditions will apply. These terms and conditions only apply to your study with Kaplan.



THERE’S A REASON 96% OF OUR STUDENTS RECOMMEND US.

ACTUALLY, THERE ARE SEVERAL.

- PASSIONATE TEACHERS
  - OVER 75 YEARS OF TEACHING EXPERIENCE
  - CENTRAL LOCATIONS
  - UNIQUE K+ LEARNING SYSTEM
- CAREFULLY CHOSEN ACCOMMODATION
  - UNIVERSITY PLACEMENT SERVICE
  - 150+ STUDENT NATIONALITIES

PUBLIC HOLIDAYS

THERE WILL BE NO CLASSES ON THE FOLLOWING DATES:

AUSTRALIA (ALL SCHOOLS)

HOLIDAY	DATE
New Year	02 January 2017
Australia Day	26 January 2017
Good Friday	14 April 2017
Easter Monday	17 April 2017
ANZAC Day	25 April 2017
Christmas Day	25 December 2017
Boxing Day	26 December 2017

NEW ZEALAND (AUCKLAND)

HOLIDAYS	DATE
New Year	02 January 2017
The Day After New Year	03 January 2017
Auckland Day	30 January 2017
Waitangi Day	06 February 2017
Good Friday	14 April 2017
Easter Monday	17 April 2017
ANZAC Day	25 April 2017
Queen’s Birthday	05 June 2017
Labour Day	23 October 2017
Christmas Day	25 December 2017
Boxing Day	26 December 2017

AUSTRALIA (BY CITY)

HOLIDAYS	DATE
Labour Day (Perth)	06 March 2017
Labour Day (Melbourne)	13 March 2017
Adelaide Cup Day	13 March 2017
Labour Day (Brisbane, Cairns)	01 May 2017
Western Australia Day (Perth)	05 June 2017
Queen’s Birthday (Sydney, Melbourne, Adelaide)	12 June 2017
Cairns Show Day	21 July 2017
Bank Holiday (Sydney)*	07 August 2017
Royal Queensland Show (Brisbane)	16 August 2017
Queen’s Birthday (Perth)	25 September 2017
AFL Grand Final Day (Melbourne)	29 September 2017
Labour Day (Sydney, Adelaide)	02 October 2017
Queen’s Birthday (Brisbane, Cairns)	02 October 2017
Melbourne Cup Day	07 November 2017

\*On 7 August 2017, no classes will run in Sydney, but both schools will be open for intakes of new students

AUSTRALIA CHRISTMAS & NEW YEAR CLOSURE:  
Closed from 25 December 2017. Open again on 2 January 2018.

NEW ZEALAND CHRISTMAS & NEW YEAR CLOSURE:  
Closed 25 December 2017. Open again on 3 January 2018.

COURSES & PROGRAMS

		NEW ZEALAND	Auckland	AUSTRALIA	Melbourne	Sydney Manly	Sydney City	Perth	Adelaide	Brisbane	Cairns
PAGE NUMBER			40		41	42	43	44	45	46	47
ENGLISH COURSES	Vacation English		✓		✓	✓	✓	✓	✓	✓	✓
	General English		✓								
	Intensive English		✓		✓	✓	✓	✓	✓	✓	✓
	Intensive English Evening				✓	✓	✓	✓			
	Academic Year		✓		✓	✓	✓	✓	✓	✓	✓
	Academic Semester		✓		✓	✓	✓	✓	✓	✓	✓
	English for Business				✓					✓	
	Intensive Business English		✓			✓					
ACADEMIC ENGLISH & EXAM PREPARATION	IELTS Preparation		✓		✓	✓	✓	✓	✓	✓	✓
	IELTS Preparation Evening					✓	✓	✓			
	Cambridge Exam Preparation		✓		✓	✓	✓	✓	✓	✓	✓
	Cambridge Exam Preparation Evening					✓	✓				
	English for Academic Purposes		✓		✓	✓	✓	✓	✓	✓	✓
ENGLISH PLUS	English Plus Diving										✓
	English Plus Surfing					✓					
	English Plus Rugby		✓								
	Demi Pair							✓			
	Group Study Tours		✓		✓	✓	✓	✓	✓	✓	✓
	English For Young Learners										✓

FACILITIES & SERVICES

		NEW ZEALAND	Auckland	AUSTRALIA	Melbourne	Sydney Manly	Sydney City	Perth	Adelaide	Brisbane	Cairns
SCHOOL SIZE*			M		M	M	M	M	S	S	S
ACCOMMODATION	Homestay		✓		✓	✓	✓	✓	✓	✓	✓
	Residential		✓		✓	✓	✓	✓	✓	✓	✓
SERVICES	Airport Transfer		✓		✓	✓	✓	✓	✓	✓	✓
	Travel & Medical Insurance		✓		✓	✓	✓	✓	✓	✓	✓
	University Placement Service		✓		✓	✓	✓	✓	✓	✓	✓
	Paid Work & Study		✓								
	Internships		✓								
FACILITIES	Interactive Whiteboards		✓		✓	✓	✓	✓	✓	✓	✓
	K+ Curriculum		✓		✓	✓	✓	✓	✓	✓	✓
	Computer/Multimedia Lab		✓		✓	✓	✓	✓	✓	✓	✓
	Student Lounge		✓		✓	✓	✓	✓	✓	✓	✓
	WiFi		✓		✓	✓	✓	✓	✓	✓	✓
	Library		✓		✓	✓	✓	✓	✓	✓	✓
	Cafeteria										✓
	Disabled Access				✓	✓				✓	
	Garden/Outdoor Area		✓			✓				✓	✓

\*SCHOOL SIZE

S

Under 150 students

M

150–300 students

Please note that school size is based on an average number of students per year, the actual number varies depending on the time of year.

## ACCREDITATION AND MEMBERSHIPS

### Australia



Kaplan International English schools in Australia are members of English Australia.

Kaplan International English schools in Australia are Quality Endorsed by the National ELT Accreditation Scheme (NEAS).

### New Zealand



Kaplan International English in New Zealand is fully accredited by NZQA.

Kaplan International English in New Zealand is a member of English NZ.